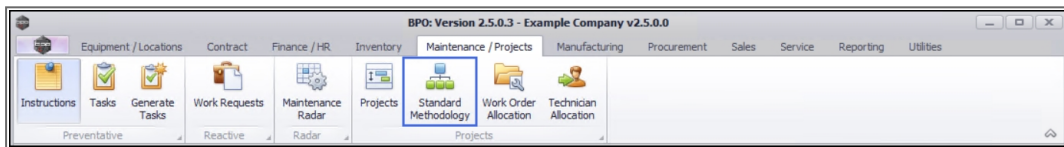


We are currently updating our site; thank you for your patience.

## PROJECTS

### STANDARD METHODOLOGY – REMOVE INTERNAL LABOUR

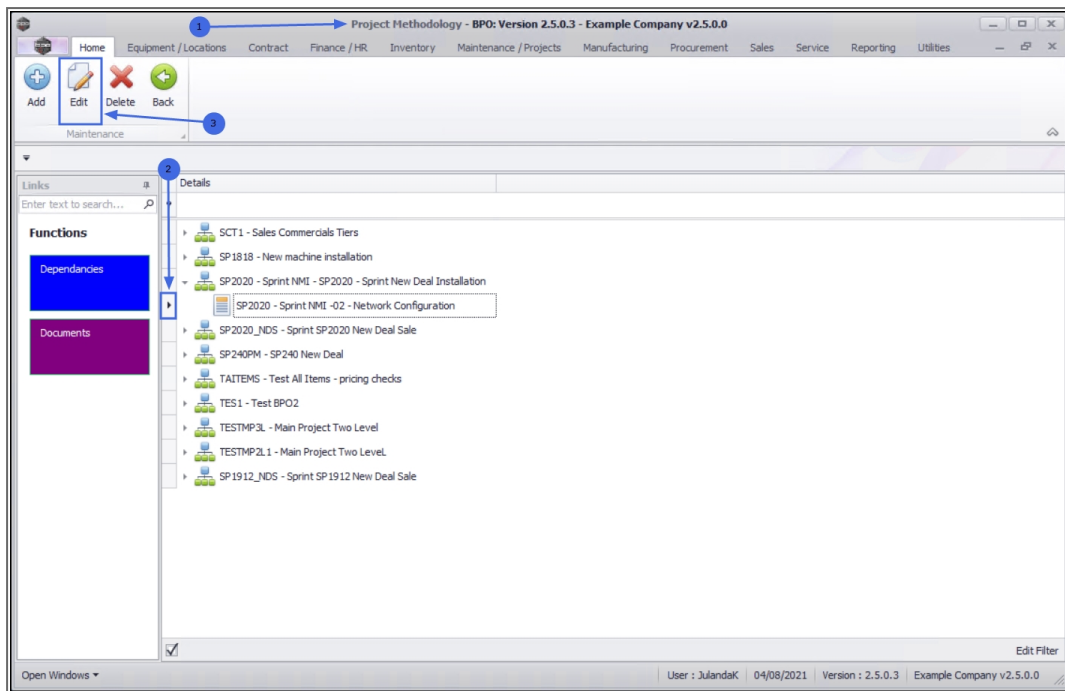
**Ribbon Access:** Maintenance / Projects > Standard Methodology




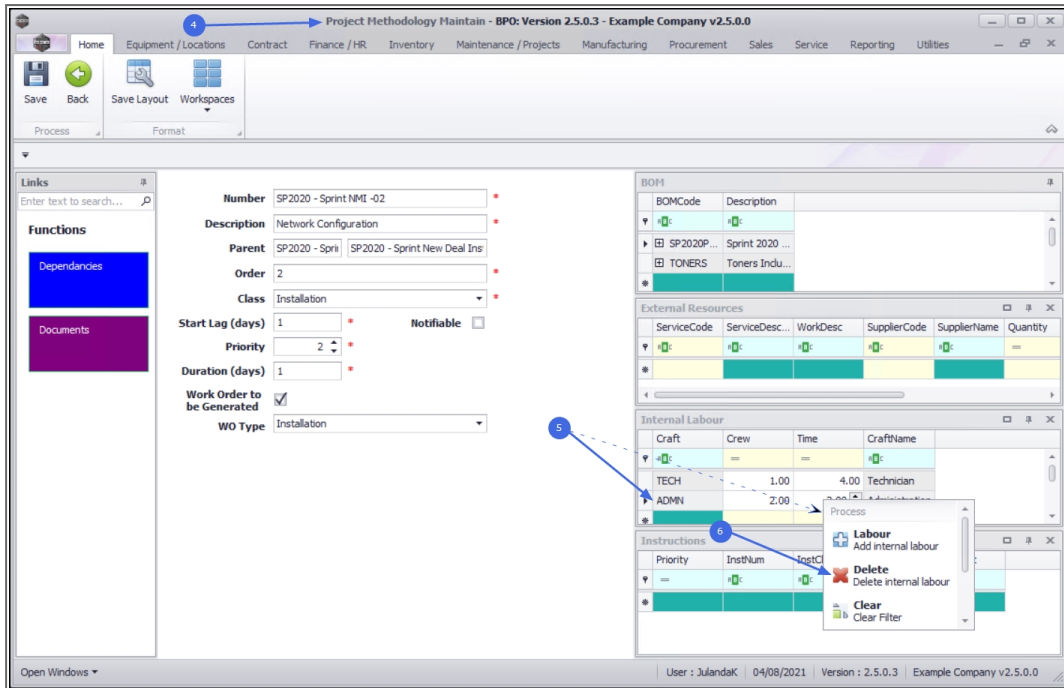
1. The **Project Methodology** screen will be displayed.
2. Click on the **row** of the **methodology layer** you wish to remove an **Internal Labour** resource from.
3. Click on **Edit**.



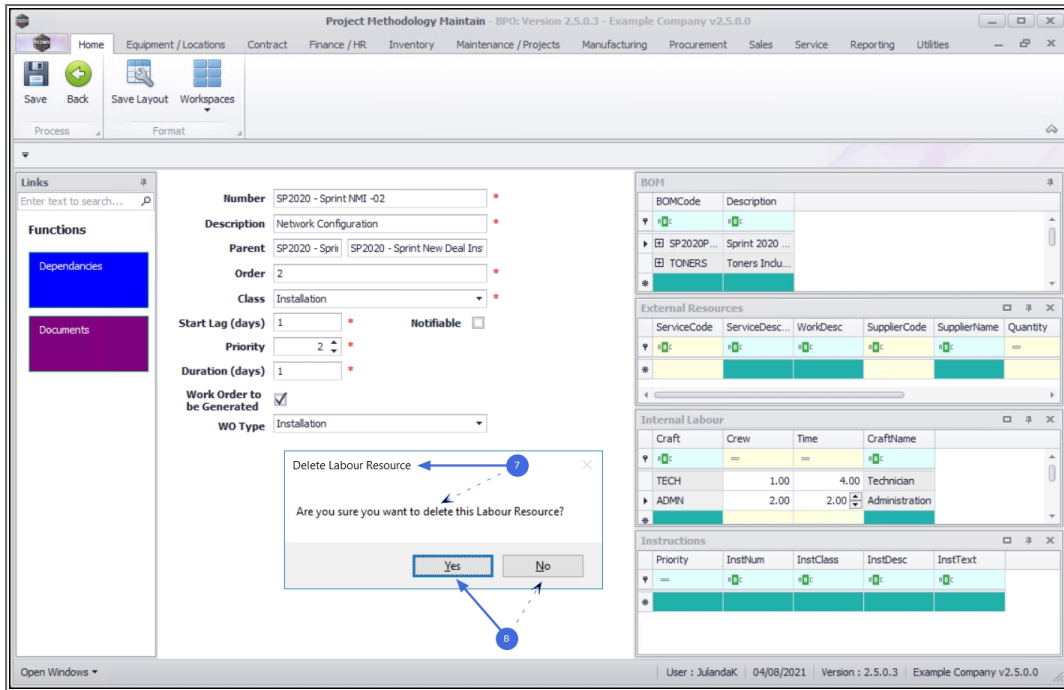
Short cut key: Right click to display the **Maintenance** menu list. Click on **Edit**.



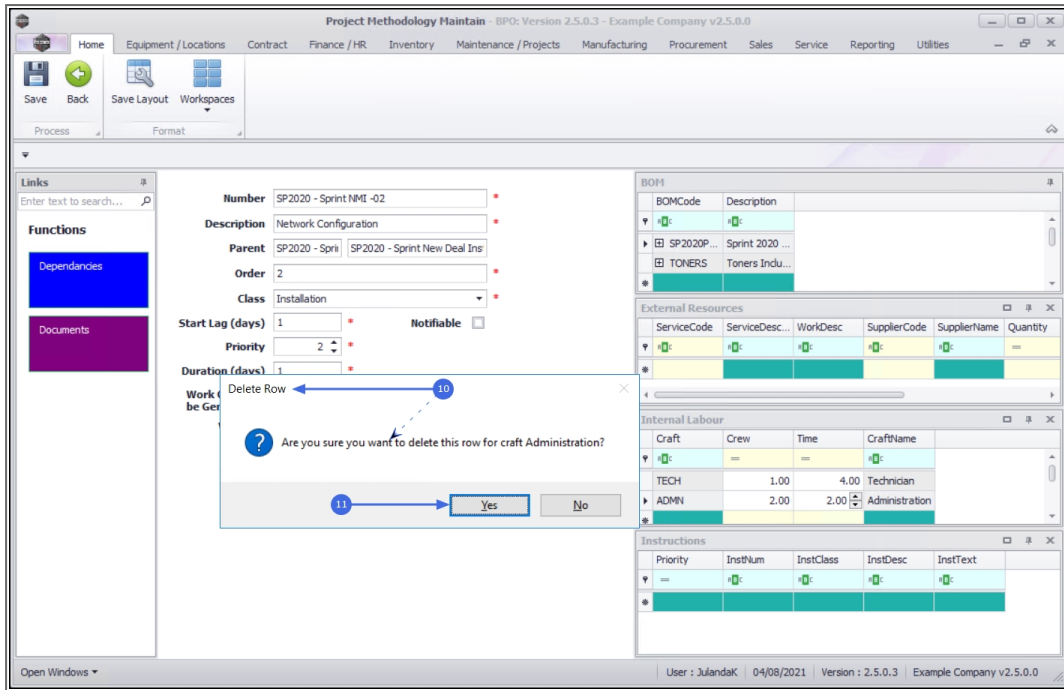
4. The **Project Methodology Maintain** screen will be displayed.
5.  **Right Click** in the row of the **Internal Labour** resource you wish to remove, to display the **Process** menu.
6. Click on **Delete** - Delete internal labour.



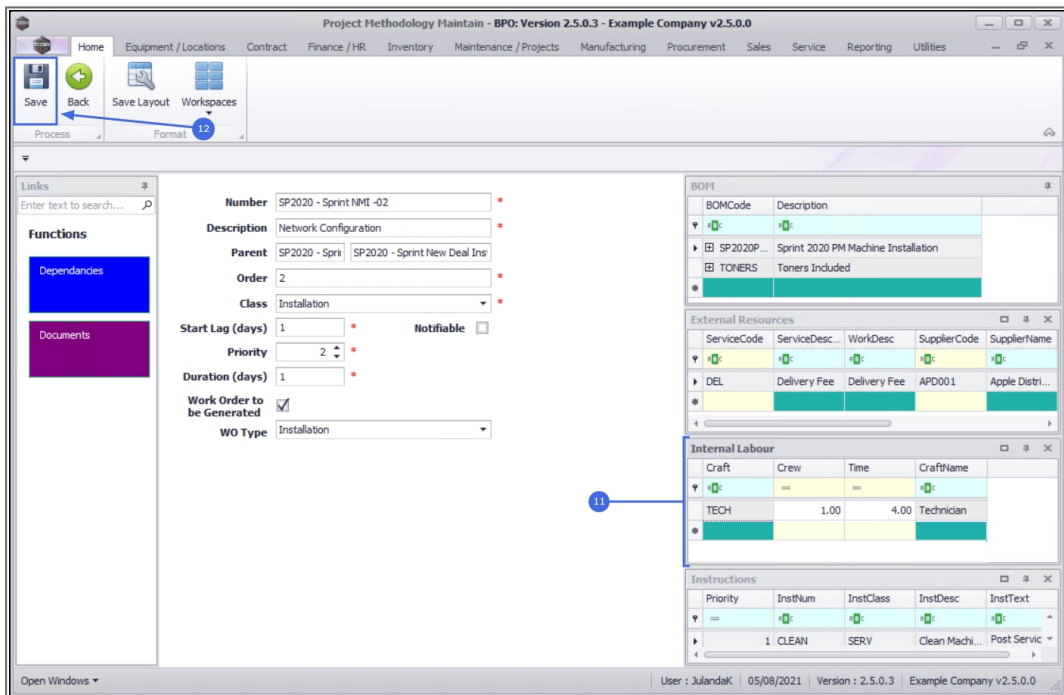
7. When you receive the **Delete Labour Resource** message to confirm;
  - Are you sure you want to delete this Labour Resource?
8. Click on **Yes**.
  - Click on **No** to ignore the request and leave the labour resource linked to the project methodology.



9. When you receive the **Delete Row** message to confirm that;
  - **Are you sure you want to delete this row for craft [craft name]?**
10. Click on **Yes**.

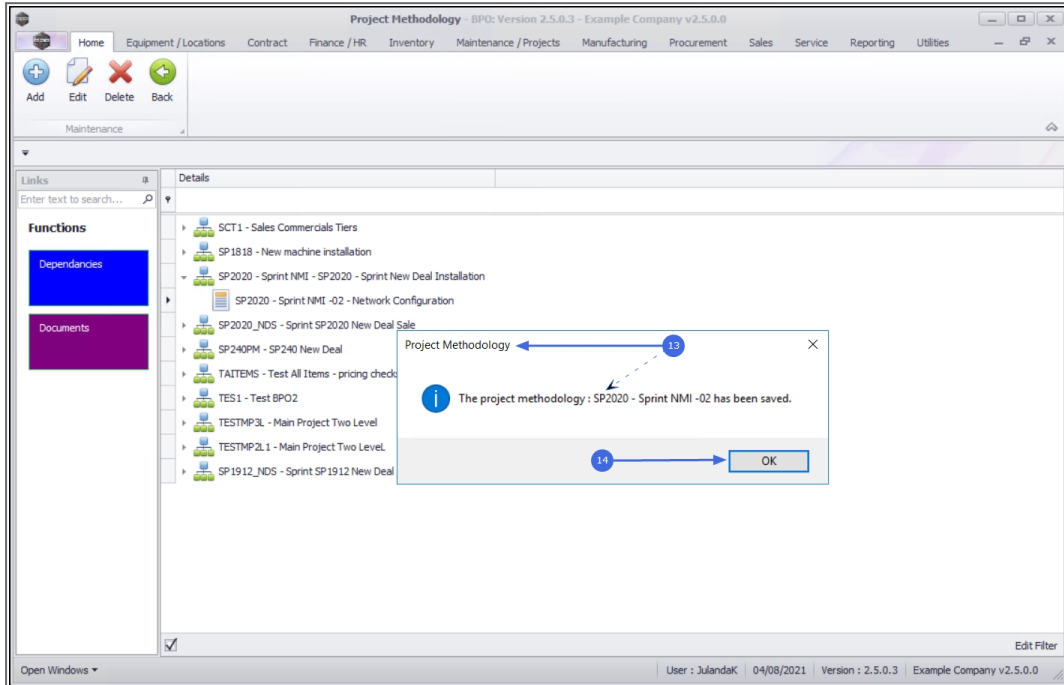


11. The Internal Labour resource has been removed from the Internal Labour frame.
12. Click on **Save** to update the Project Methodology screen.



13. When you receive the **Project Methodology** message to confirm that;
- **The project methodology : [methodology name] has been saved.**

14. Click on **OK**.



MNU.153.008