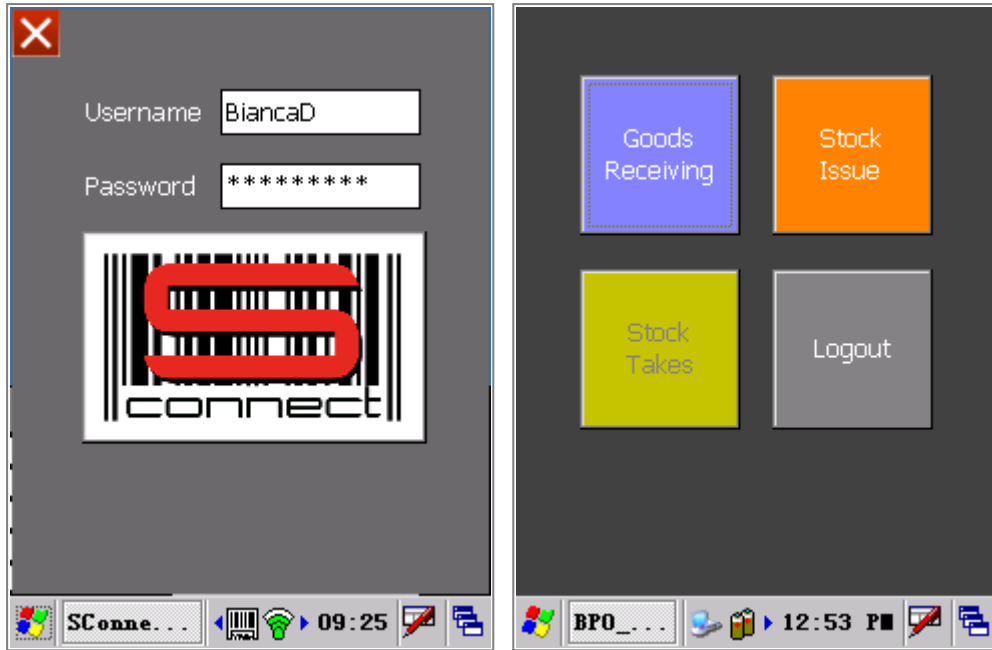


We are currently updating our site; thank you for your patience.

SCONNECT

INTRODUCTION TO SCONNECT

- SConnect is an application that runs on a Microsoft CE 5 Hand-held Scanner, and gives the user the ability to scan part bar codes for Stock Receipts (Goods Received Notes) and Stock Issues.
- SConnect supports Receiving and Issuing of Alternate Part Code, Serialised and Non Serialised Parts, Internal Assets (e.g. Loan Units or Rental Assets) - issued from an Asset Warehouse.
- Where parts are serialised, the user can either type in or scan the serial number.
- In order for the scanner to recognise the parts scanned, the bar code must be linked to the part code. [Bar codes are saved per Supplier on the Supplier Link against the Inventory Definition.](#)
- Inter warehouse transfers must be done in BPO.
- A bin is not selected when receiving or issuing stock with ScannerConnect. You need to ensure that the [Part Site Defaults](#) are configured on the Inventory Definitions, so that the system can find the default bin. (Remember to set up any additional stock warehouses - such as Bootstock, etc.).
- For issue of internal assets, you need to ensure that only **1** asset warehouse per site is configured, with only **1** bin
- A part cannot be scanned if a bar code is not available on the supplier link. [Bar codes are saved per Supplier on the Supplier Link against the Inventory Definition.](#) If a bar code has not been configured, you will get the following messages:



Related Topics

- [Receiving Stock](#)
- [Issuing Stock](#)

MNU.154.001