

We are currently updating our site; thank you for your patience.

BPO2

'CANNOT INSERT THE VALUE NULL INTO COLUMN...'

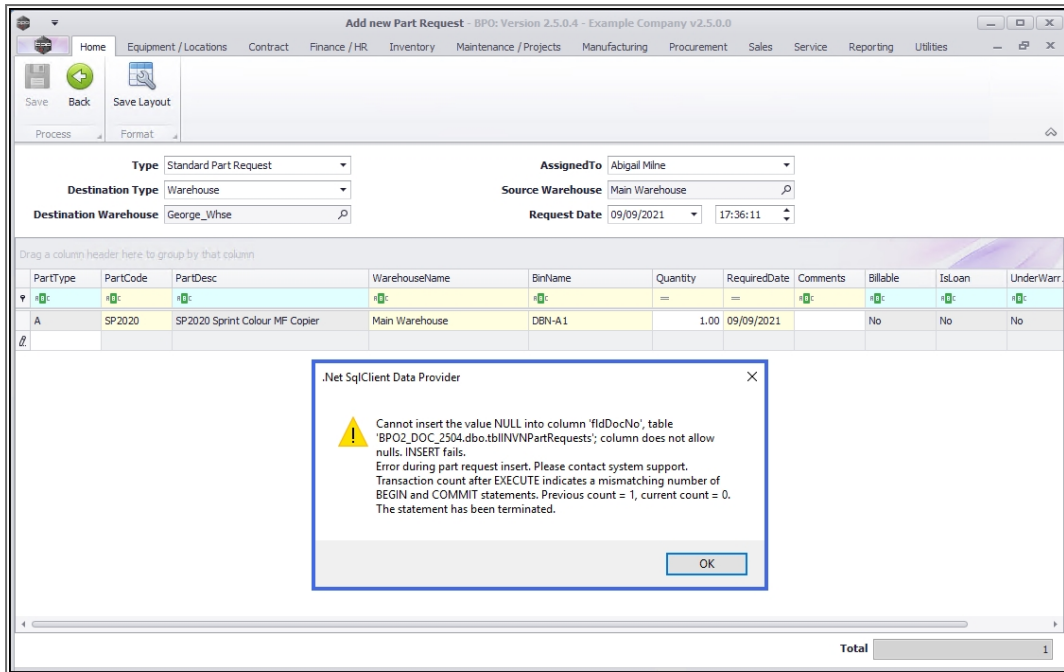
When saving information in a screen, the following error message may pop up:

.NetSqlClient Data Provider



**Cannot insert the value Null into column ['fldDocNo'], table ['BPO2_DOC_2504.dbo.tblINVNPartRequests']; column does not allow nulls.
INSERT fails.**

Error during [part request] insert. Please contact system support. Transaction count after EXECUTE indicates a mismatching number of BEGIN and COMMIT statements. Previous count = 1, current count = 0. The statement has been terminated.



This is due to the **Site** not being selected in the previous Listing screen.

Fix

- i. Click on **OK** to remove the error message.
- ii. Click on **Back** to return to the previous Listing screen and select the relevant **Site** in the Site filter field. [For a detailed handling of this topic refer to Site Selection.](#)
- iii. With the Site selected, repeat the process and you will be able to **Save** the information.

ST.000.004