

We are currently updating our site; thank you for your patience.

BPO BULK GRN MANAGER

This functionality allows for importing a high volume of serial numbers by part code and to quickly select and drag multiple items to be GRN'd. The Bulk GRNs will be saved on the GRN screen and then processed in the BPO_BulkGRNManager console application (run via Task Scheduler). This will decrease time taken to process GRNs that have a large number of items.

CONFIGURATION

To use this functionality, the following configuration is required:

- The Company Configuration **BulkGRNLimit**¹ must be set.
- **BPO_BulkGRNManager** console application to be installed, configured and running on the application server.

NOTES

- Current stock GRN processing will remain unchanged, except for when the number of items to process is greater than the limit value set for the Company Configuration Flag BulkGRNLimit.
- The imported details required are the PartCode and SerialNo.
- Select either a CSV or EXCEL file to be imported.
- Once all the items are valid and processed by the console application, then it will create an entry into the processing queue for the PostingEngine application to process to the financial system.

¹The number of lines within a GRN that must be reached in order to generate a Bulk GRN in order to decrease time taken to process GRNs that have a large number of items.



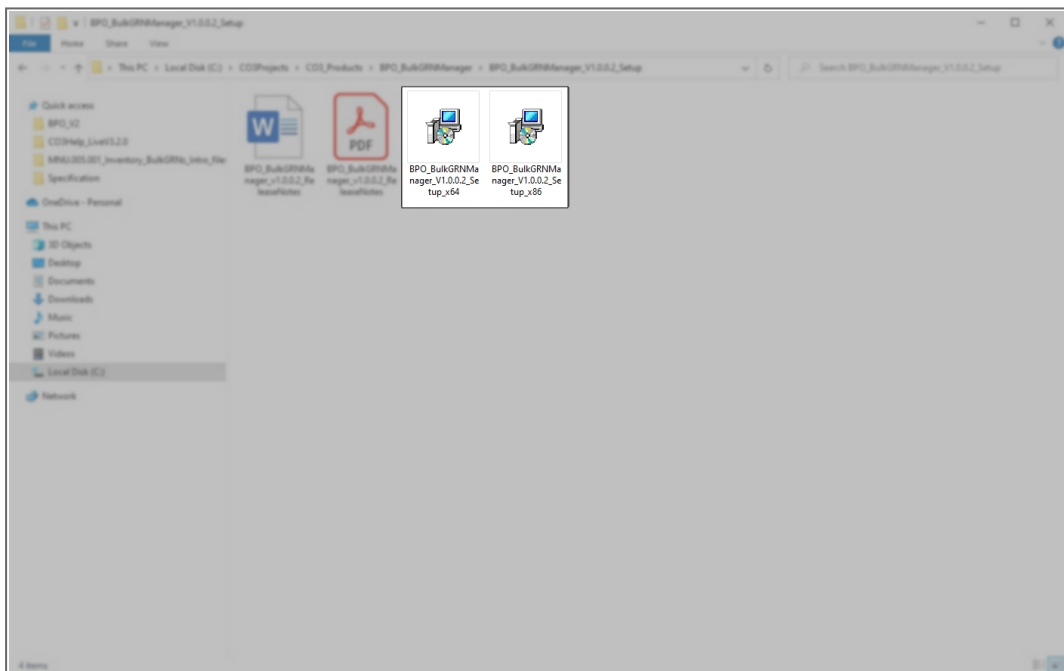
Refer to "[Configuration](#)" on [page 1](#) for more information relating to the process required for information to be processed by this application.

REQUIREMENTS

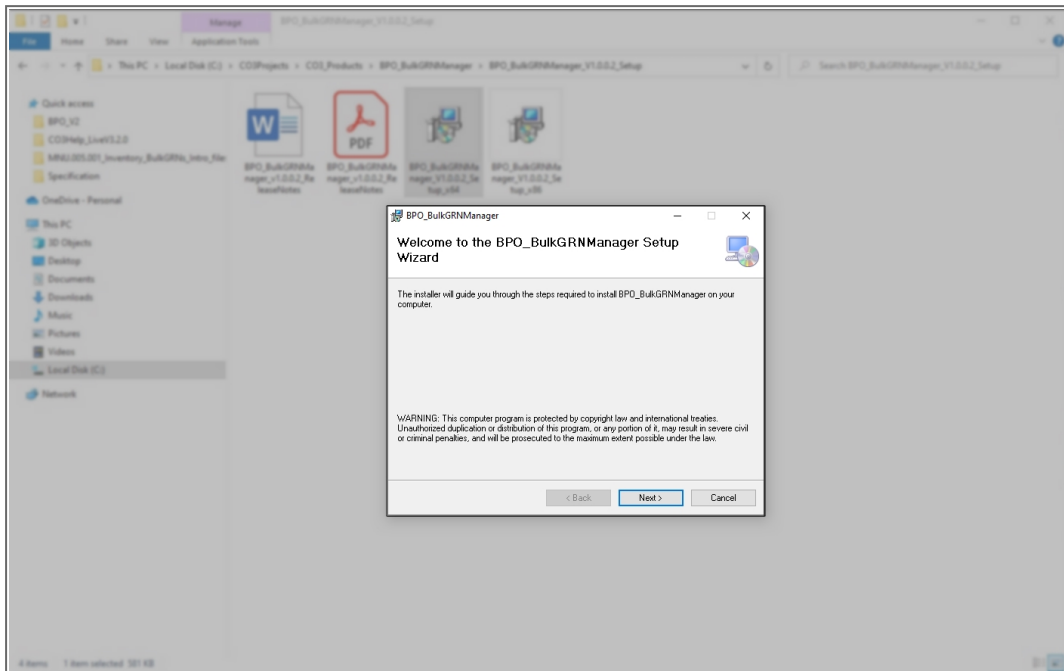
- BPO2 v2.5.0.8 or later
- This application will be installed by your CO3 Analyst or BPO System Administrator on your company's application server, and scheduled to run automatically. Confirm with your System Administrator to check on the interval configured for your company.

INSTALLATION

- Double click on the 'BPO_BulkGRNManager' install file.
 - **Note:** Check that you have the latest version compatible with your version of BPO.



- The **Installation Wizard** will open.
- Click on **Next**.

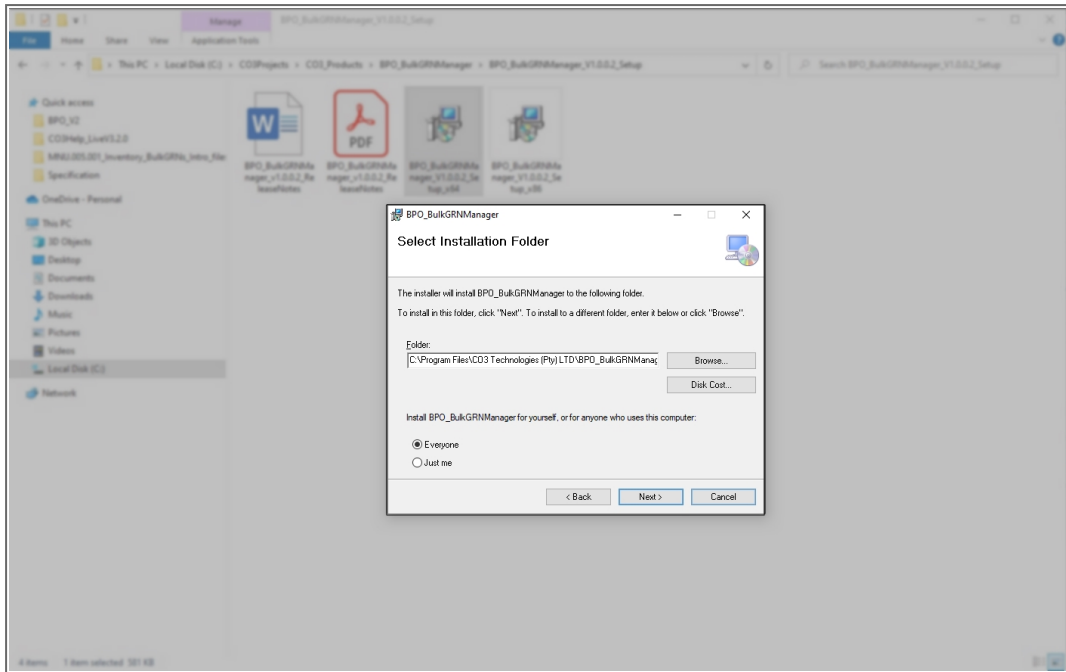


- The default location for installation is:

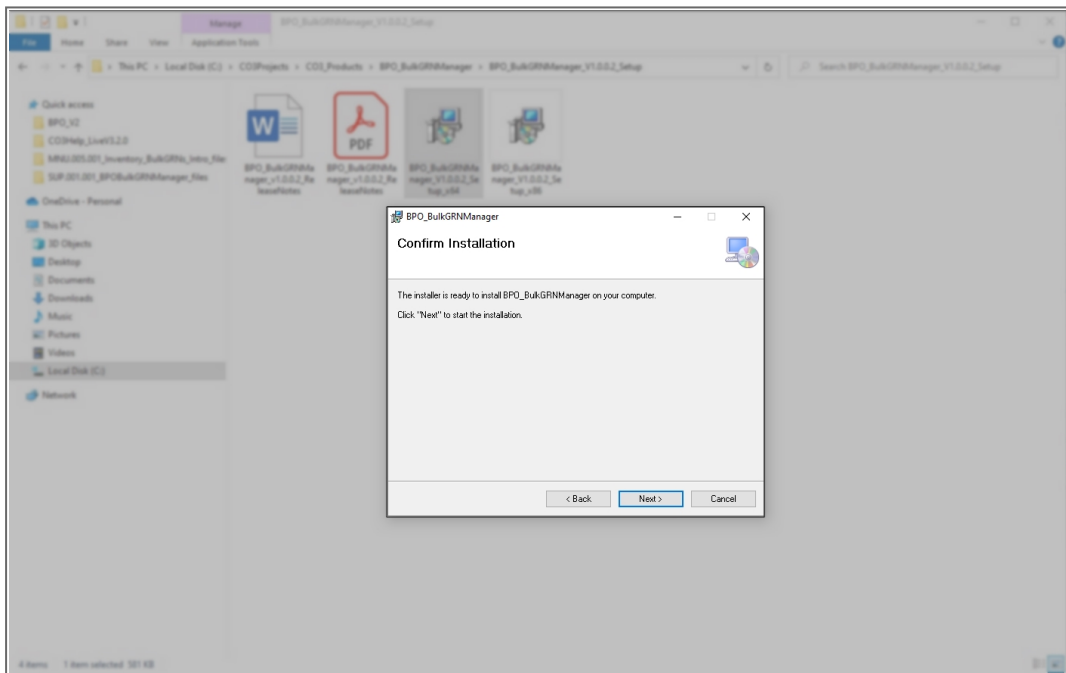
C:\Program Files\CO3 Technologies (Pty) LTD\BPO_BulkGRNManager

It is recommended that you keep this default location. Keeping a standard will make upgrades easier.

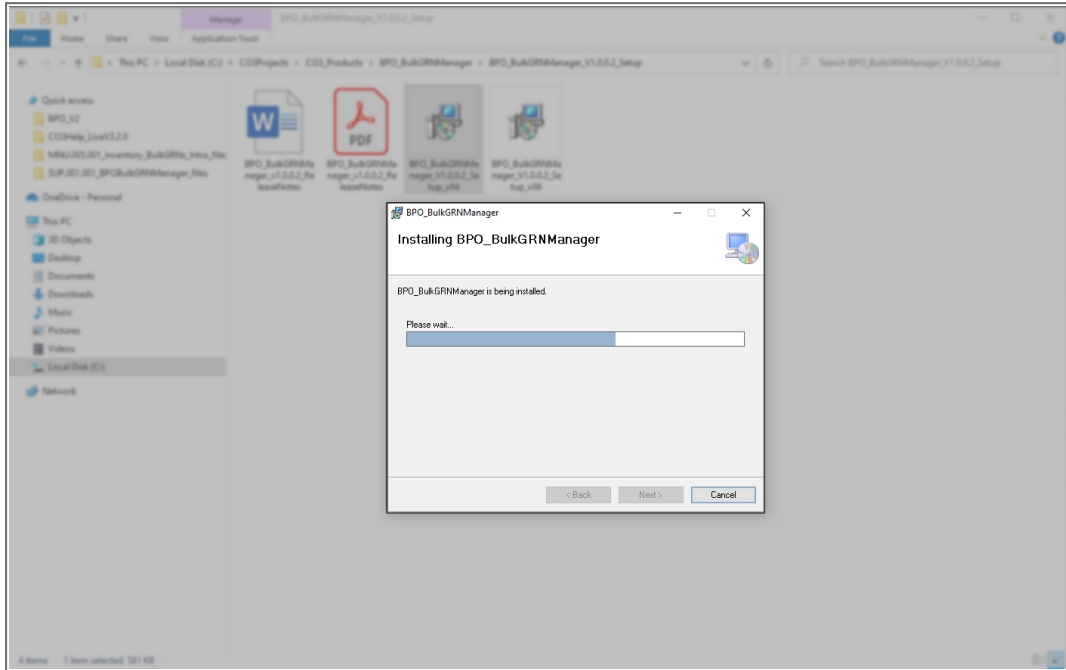
- Ensure that **Everyone** is selected for the install.
- Click on the **Next** button.



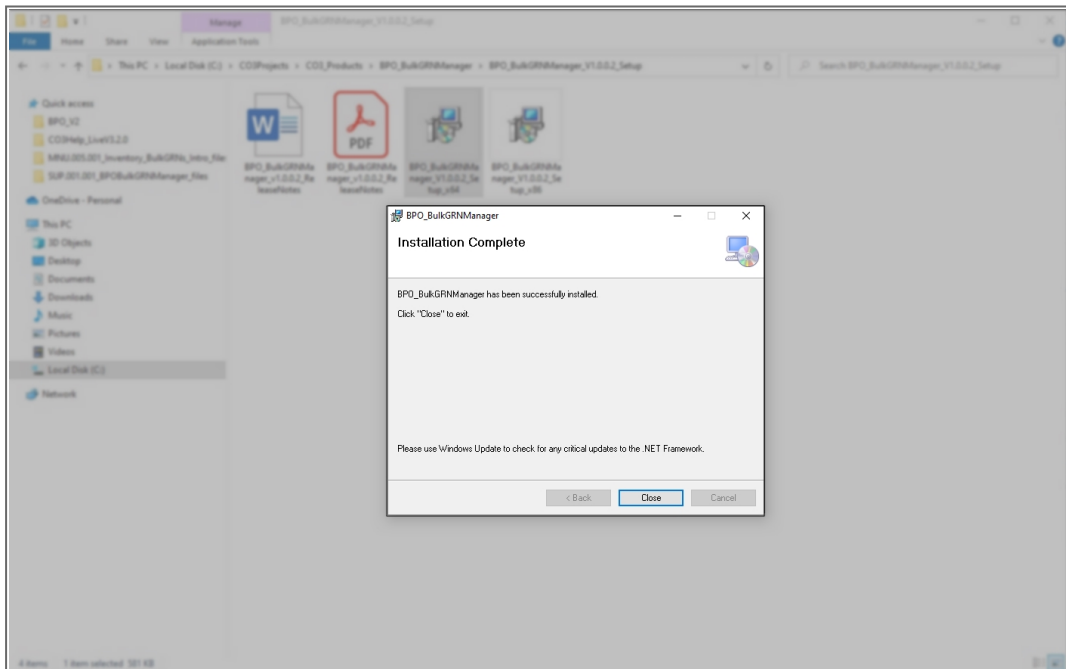
- The installer will ask you to **Confirm Installation**.
- Click on **Next** to start the installation.



- The **BPO Bulk GRN Manager** installation will begin.
- **Wait** for it to be completed.



- Once Installation is **Complete**.
- Click on **Close**.

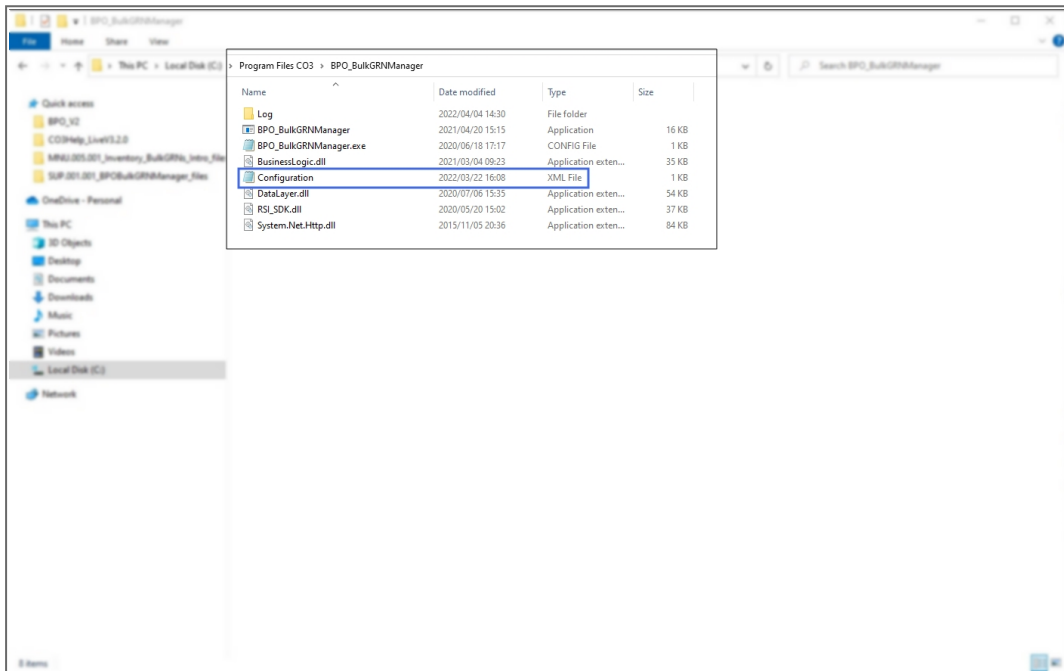


CONFIGURATION

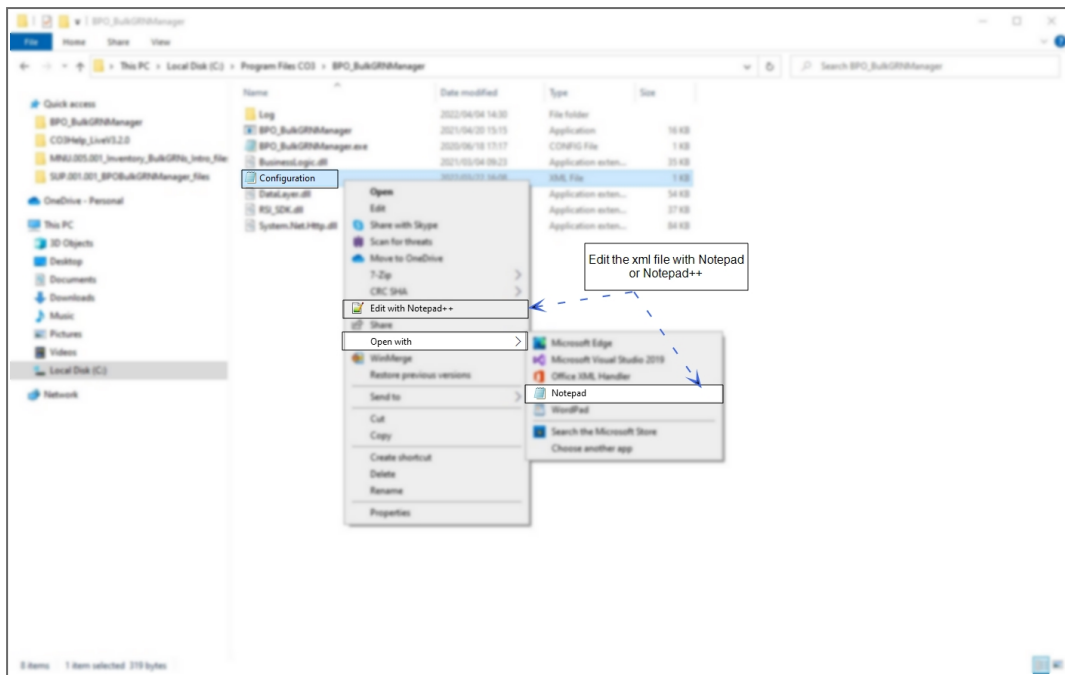
1. In your File Explorer, search for the following file location:

**C:\Program Files\CO3 Technologies (Pty) LTD\BPO_
BulkGRNManager**

- Right click on the **Envn.xml** file.

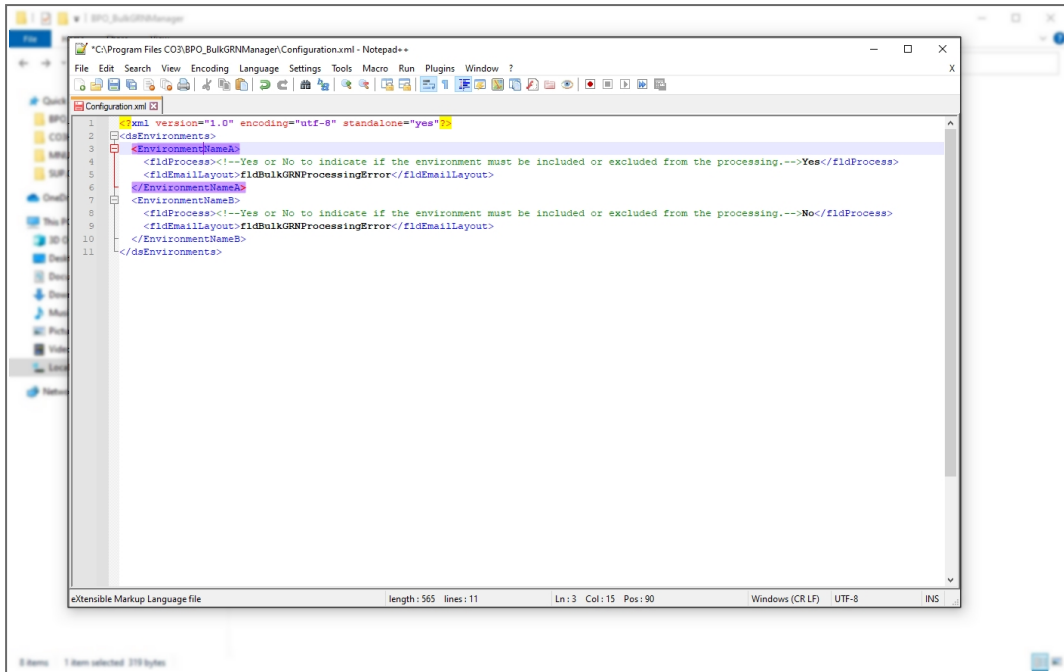


- The **File menu** will open.
- Select to either Open with *Notepad* or **Edit with Notepad++** (or any program that will allow editing and saving an xml file).



The xml file will open in the selected program.

- Type in the **Environment Name** as defined for this database, in the **Service Manager**.
- Select **Yes to Process** the selected environment.
- Keep the default EmailLayout, as this field is used for the error notification description.

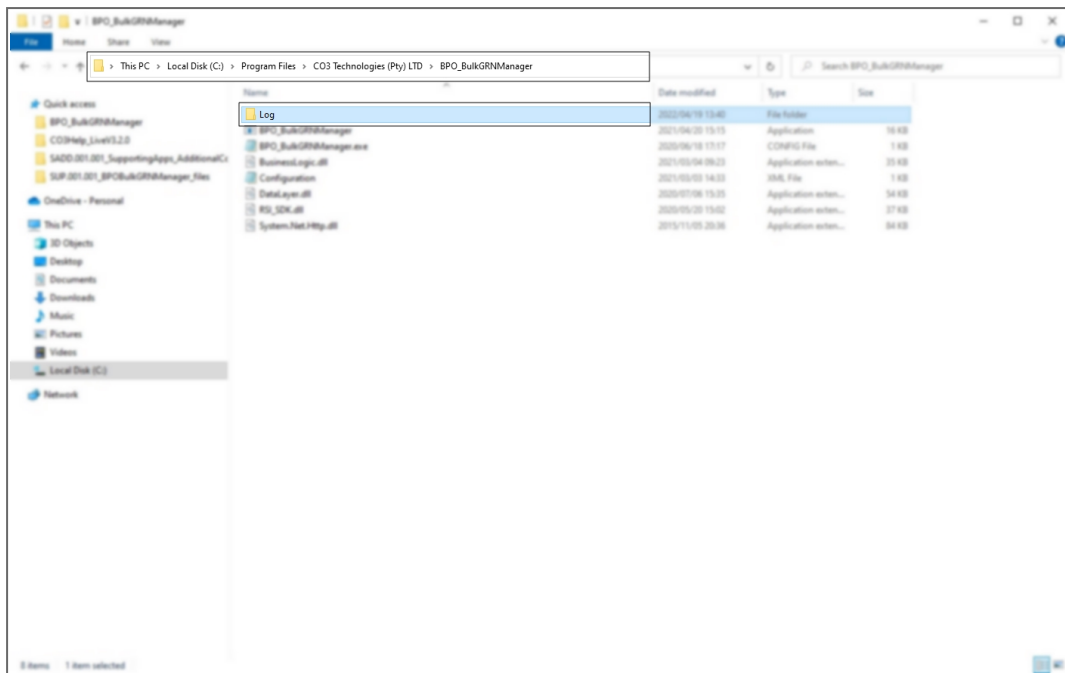


- Multiple environments are configured by setting up additional <Environment> tags within the main <dsEnvironments> tag.

CONFIGURE SCHEDULED TASK

BPO Supporting Console Applications can be run manually to test all configuration has been set up correctly, but must be set up to run via a Windows Scheduled Task, to run at an interval that meets your company's requirements. It is recommended to run bulk processing applications to run nightly to avoid load on the system during the day when users are working.

- Search for and open **Task Scheduler**



- Right click on the Windows Start button and select **Task Manager**



Refer to "[Add Scheduled Task](#)" on [page 1](#) for more information relating to setting up a Windows Scheduled Task for BPO Bulk GRN Manager.

RUN APPLICATION AND CHECK LOGS

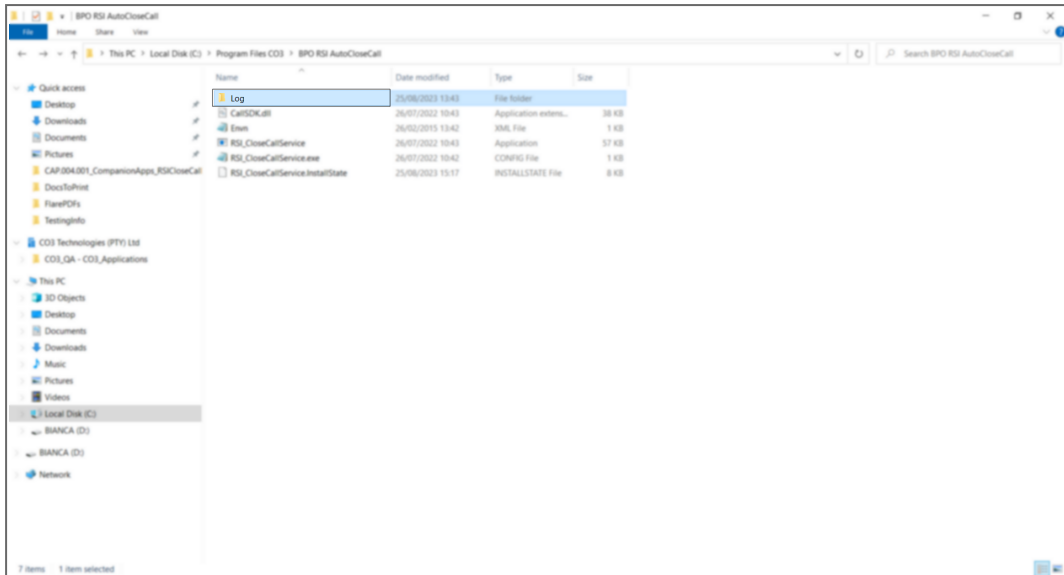
Running the application after installation and configuration is important, in order to ensure all configuration has been done correctly.



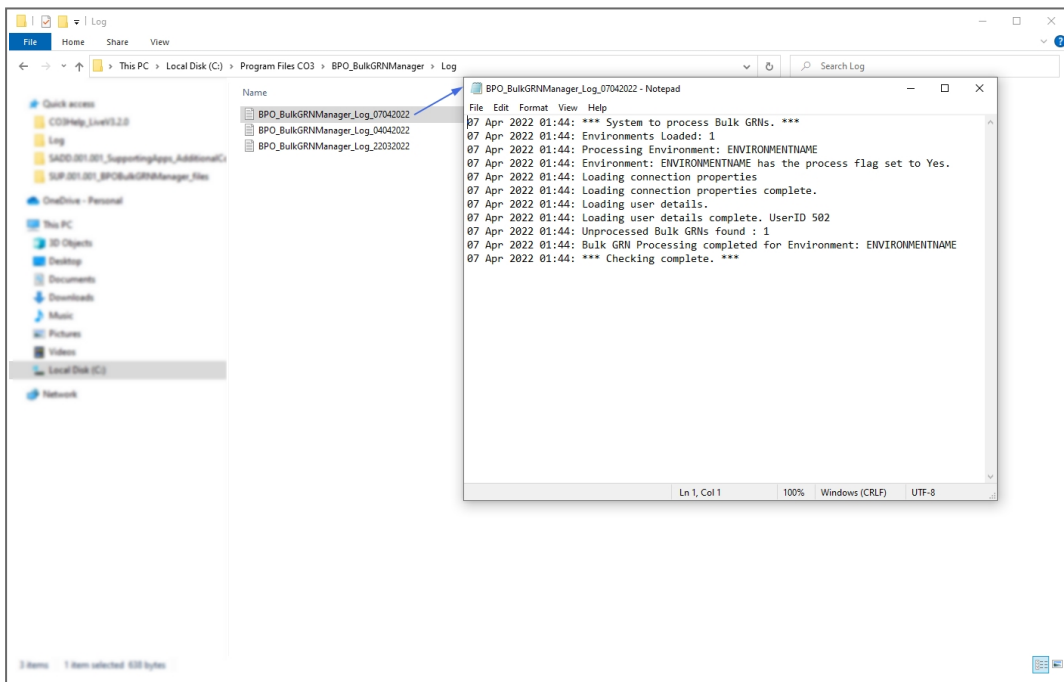
Refer to "[Manually Test Run Scheduled Task](#)" on [page 12](#) for more information relating to running a Windows Scheduled Task for BPO Bulk GRN Manager.

After running the application check the application's log to ensure the application is running correctly.

- Browse to the application's installation folder.
- Log text files are generated by date within the **Log** folder.



- Open the Log file generated for the corresponding date.
- Check that connection was successful, and that there are no errors in the log.
- Resolve any issues until the log file is clear of errors.



- It is recommended that you check the log files the following day to make sure the Scheduled Task fired that there are no errors in the log.
- This application can now be left to run via the Windows Scheduled Task.
- Review the log if any issues arise on BPO related to this functionality.

Related Topics

- [Bulk GRN Processing](#)

SUP.001.001

