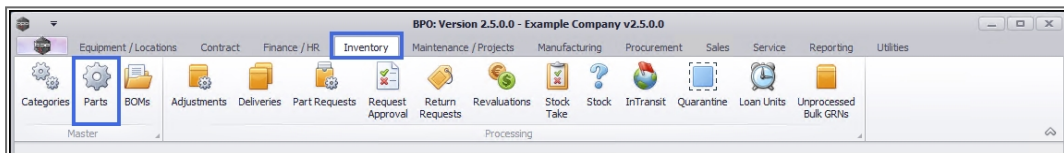


INVENTORY

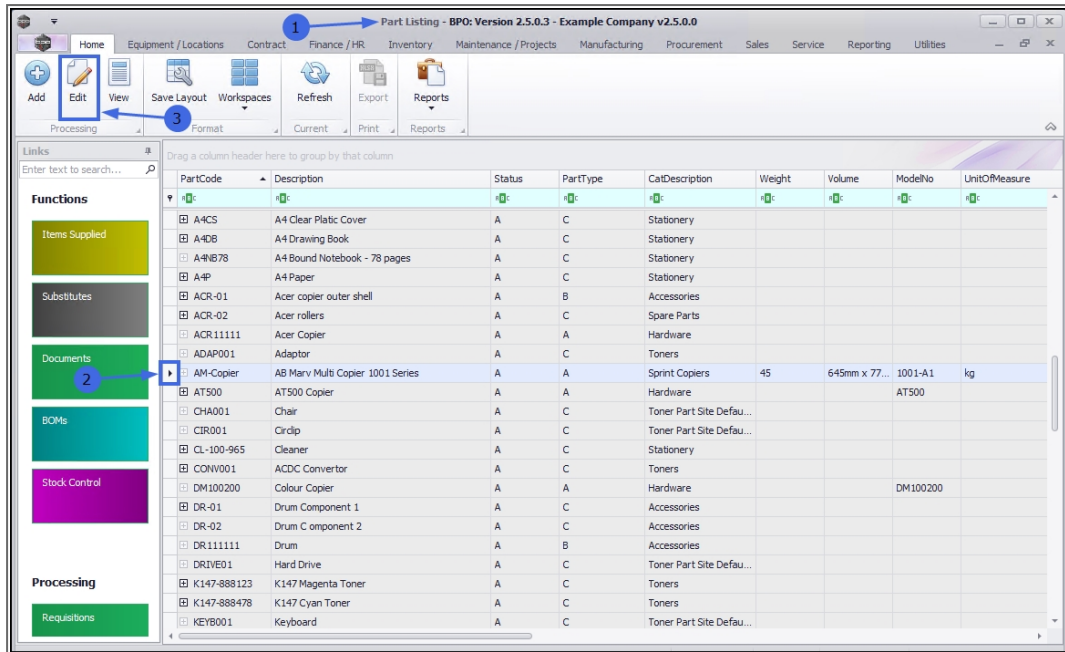
PARTS – EDIT PART DEFINITION BOM ALLOCATION

A part definition's **BOM Allocation** panel details may need to be edited after it has been added and saved to the system.

Ribbon Access: Inventory > Parts

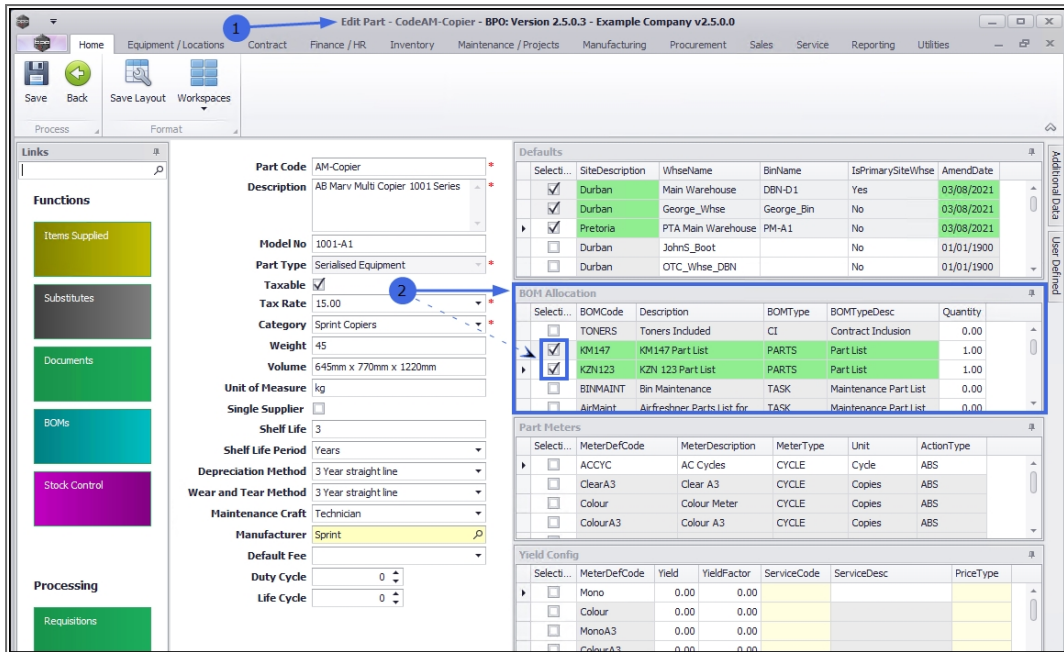


1. The **Part Listing** screen will display.
2. Select the **row** of the part definition where you wish to make changes to the **BOM Allocations** details.
3. Click on **Edit**.

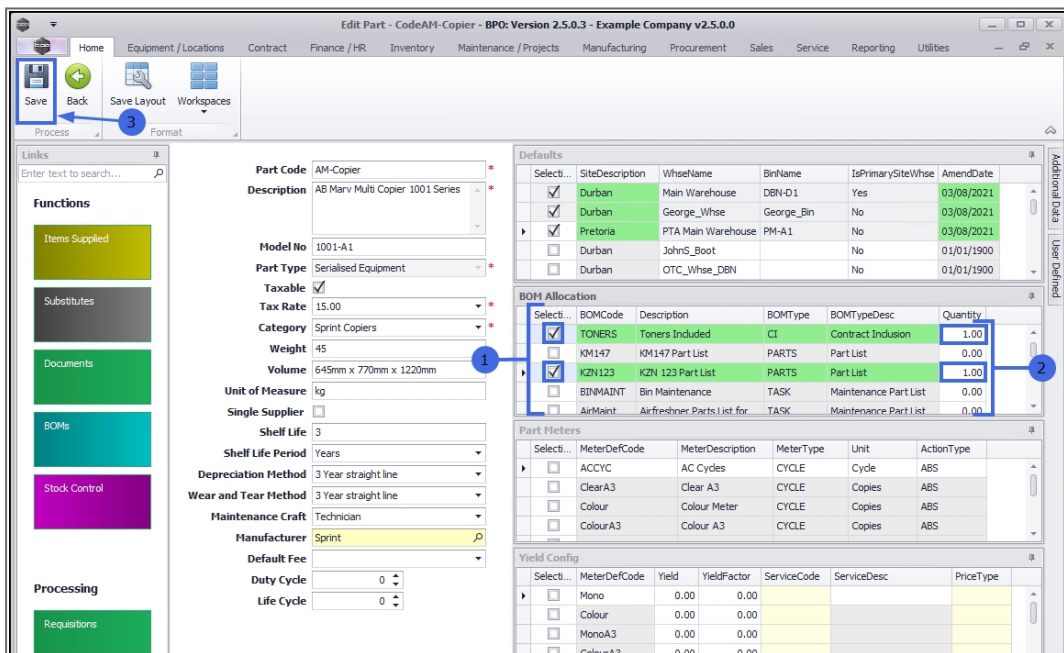


1. The **Edit Part** screen will open.
2. In the **BOM Allocation** panel, you can see there are **2** BOMs already linked to the part definition.

In this example, the part definition is to be unlinked from one of these BOMs and linked to a different BOM.



1. Make the required changes to the **BOM Allocation** panel.
2. Ensure the requisite **Quantity** of the edited BOM Allocations have been adjusted.
3. Click on **Save**.



Your changes will be saved and you will return to the **Part Listing** screen.

The screenshot shows the 'Part Listing' window in 'BPO: Version 2.5.0.3 - Example Company v2.5.0.0'. The interface includes a menu bar, a toolbar with icons for Add, Edit, View, Save Layout, Workspaces, Refresh, Export, and Reports, and a sidebar with 'Functions' (Items Supplied, Substitutes, Documents, BOMs, Stock Control) and 'Processing' (Requisitions). The main area displays a table with columns: PartCode, Description, Status, PartType, CatDescription, Weight, Volume, ModelNo, UnitOfMeasure, ShelfLife, PeriodType, PeriodTypeDesc, and Manuf. The table lists various parts such as A4 Paper, A4 Drawing Book, Copier, and Sprint Copiers.

PartCode	Description	Status	PartType	CatDescription	Weight	Volume	ModelNo	UnitOfMeasure	ShelfLife	PeriodType	PeriodTypeDesc	Manuf
A4P	A4 Paper	A	C	Stationery					0.00			
A4DB	A4 Drawing Book	A	C	Stationery					0.00			
540-147K	Compatible black toner	A	C	Toners					0.00			
SAN	Sanitizer	A	C	Spare Parts					0.00			
SP 1020	Copier	A	A	Hardware			SP 1020		0.00			
1020-478	Staple Unit	A	B	Accessories			1020-4...		0.00			
1020-147K	Toner Black	A	C	Toners					0.00			
1020-147C	Toner Cyan	A	C	Toners					0.00			
1020-147M	Toner Magenta	A	C	Toners					0.00			
1020-147Y	Toner Yellow	A	C	Toners					0.00			
2020-147Y	Yellow toner SP2020	A	C	Toners					0.00			
ADAP001	Adaptor	A	C	Toners					0.00			
SABS001	Testing for Kame	A	A	Hardware			SABS		0.00			Kyt
SABS002	Testing for Kame	A	B	Spare Parts					0.00			
SABS003	Test for Kame	A	C	Toners					0.00			
MASPCP060	Sprint Copier SP060	A	A	Sprint Copiers	21	2000	SP060	ea	5.00	yyyy	Years	Spr
SP-ABI-COP-1...	Sprint Copier ABI 100 Series	A	A	Sprint Copiers	10		ABI 10...	ea	10.00	yyyy	Years	Spr
SP-ABI-DRU-1...	Sprint Drum ABI 100 Series	A	B	Accessories	3		ABI 10...	ea	5.00	yyyy	Years	Spr
MASPRU060	Drum for SP060 Copier	A	B	Accessories	6	10 x 24	SP060-1	ea	12.00	m	Months	Spr
MASPTON060	Black Toner SP060	A	C	Toners	6	10 x 24	BLACK-...	ea	12.00	m	Months	Spr
AM-Copier	AB Marv Multi Copier 1001 ...	A	A	Sprint Copiers	45	645mm x...	1001-A1	kg	3.00	yyyy	Years	Spr
SP-ABI-TON-B...	Sprint Toner Black ABI 100 ...	A	C	Toners	1		ABI 10...	ea	12.00	m	Months	Spr

Related Topics

- [Edit Part Definition Details](#)
- [Edit Part Definition Defaults](#)
- [Edit Part Definition Part Meters](#)
- [Edit Part Definition Yield Config](#)
- [Edit Part Definition Additional Data](#)
- [Edit Part Definition User Defined](#)

MNU.026.042