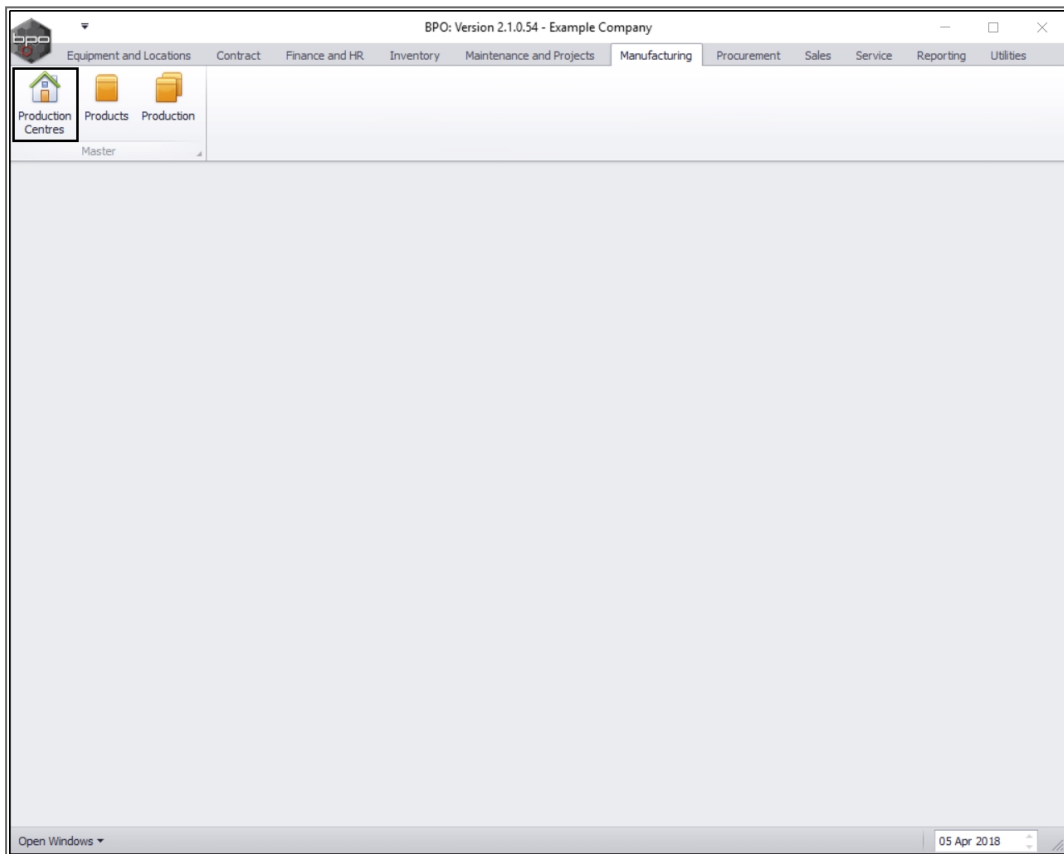


# MANUFACTURING

## PRODUCTION CENTRES – ADD A PRODUCTION CENTRE

A **production centre** needs to be set up in order to determine the relevant site, and general ledger account codes for transactional processing.

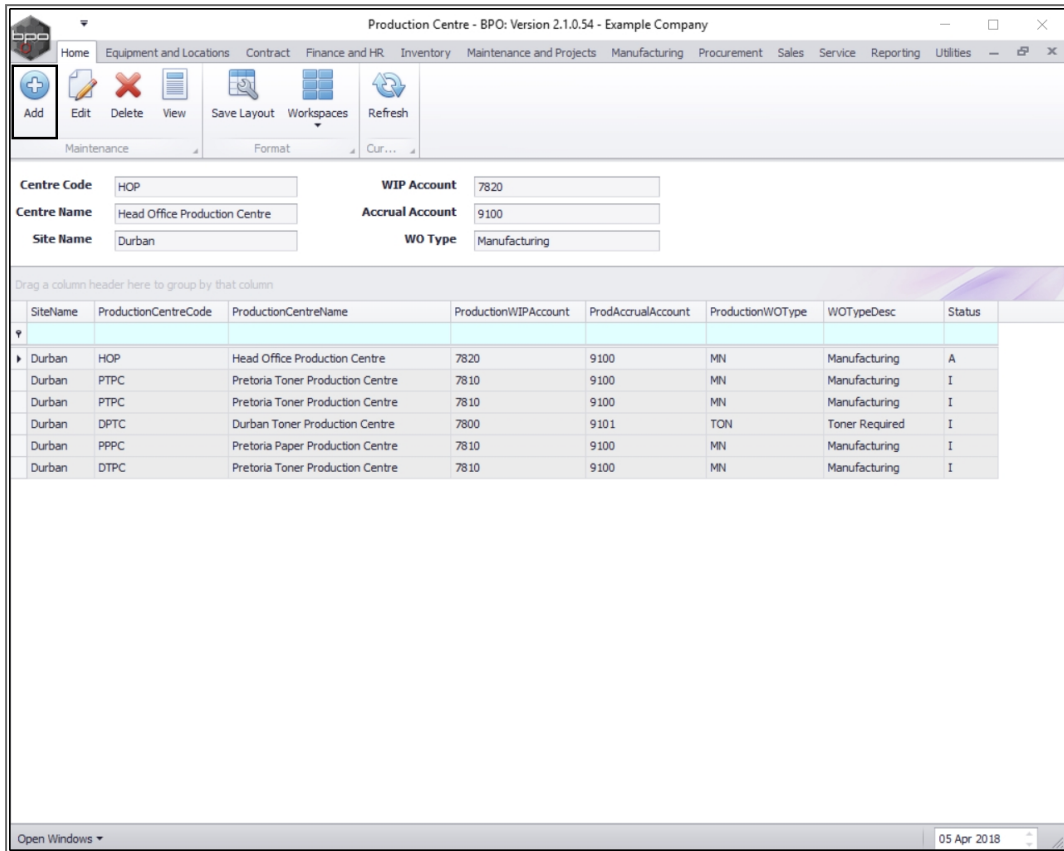
**Ribbon Access:** *Manufacturing > Production Centres*



- The ***Production Centre*** listing screen will be displayed.
- Here you can view a list of all the production centres currently set up on the system.

## ADD A PRODUCTION CENTRE

- Click on **Add**.



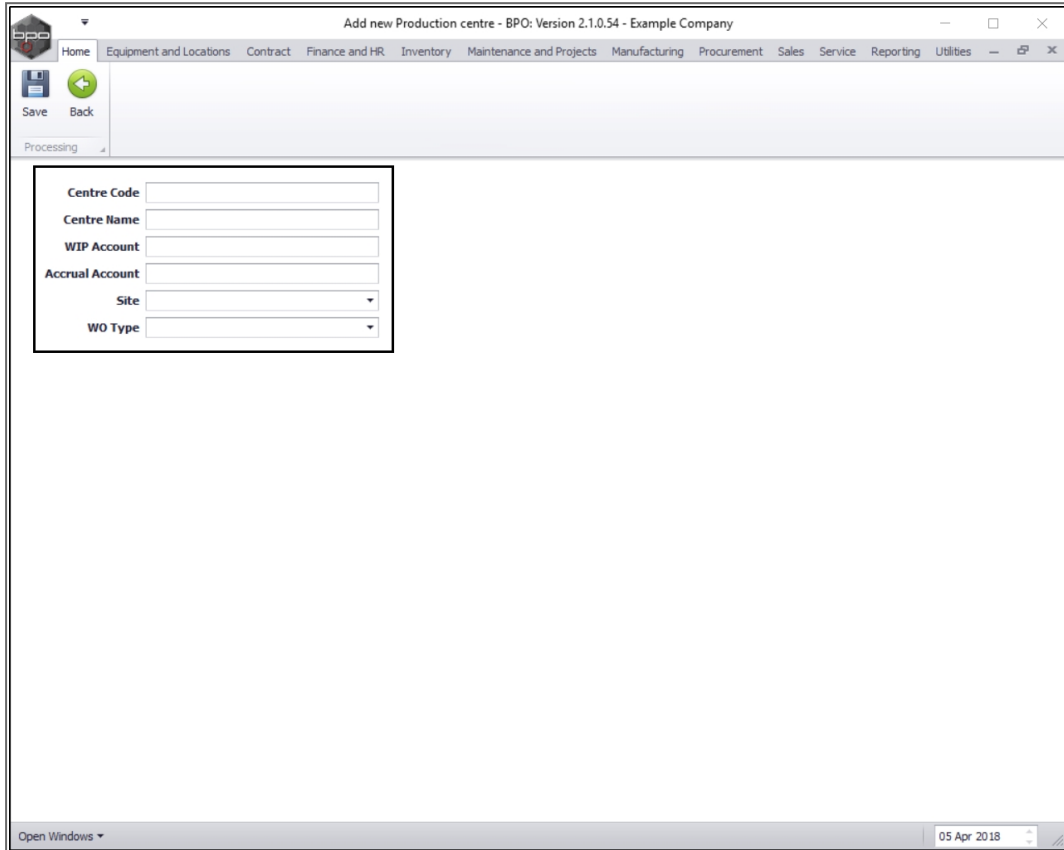
SiteName	ProductionCentreCode	ProductionCentreName	ProductionWIPAccount	ProdAccrualAccount	ProductionWOType	WOTypeDesc	Status
Durban	HOP	Head Office Production Centre	7820	9100	MN	Manufacturing	A
Durban	PTPC	Pretoria Toner Production Centre	7810	9100	MN	Manufacturing	I
Durban	PTPC	Pretoria Toner Production Centre	7810	9100	MN	Manufacturing	I
Durban	DPTC	Durban Toner Production Centre	7800	9101	TON	Toner Required	I
Durban	PPPC	Pretoria Paper Production Centre	7810	9100	MN	Manufacturing	I
Durban	DTPC	Pretoria Toner Production Centre	7810	9100	MN	Manufacturing	I

- The **Add New Production Centre** screen will be displayed.

## ADD PRODUCTION CENTRE DETAILS

- **Centre Code:** Click in this text box and type in a **centre code**.
- **Centre Name:** Click in this text box and type in a **centre name**.
- **WIP Account:** Click in this text box and type in the **production work in progress** general ledger account code.
- **Accrual Account:** Click in this text box and type in the **production accrual** general ledger account code

- **Site:** Click on the drop-down arrow and select from the list, the *site* for this production centre.
- **WO Type:** Click on the drop-down arrow and select from the list, the *work order type* for this production centre.



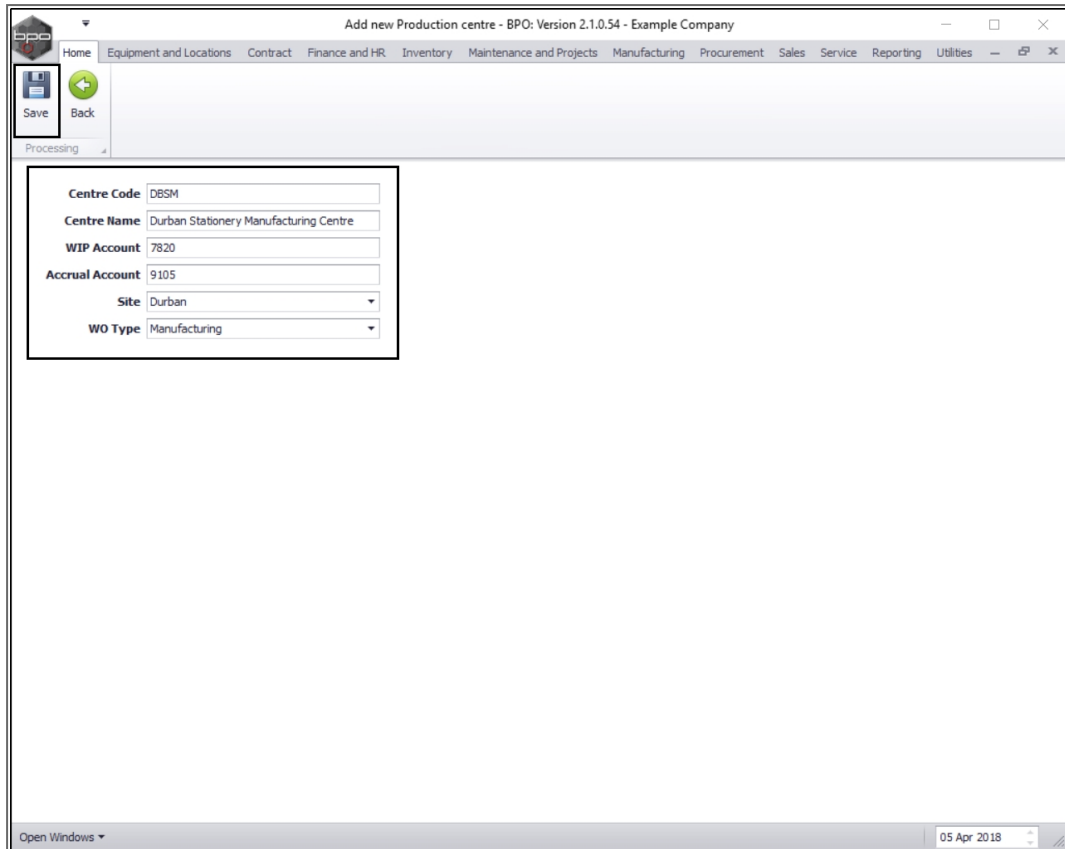
The screenshot shows a web browser window titled "Add new Production centre - BPO: Version 2.1.0.54 - Example Company". The browser's address bar and menu bar are visible. The main content area contains a form with the following fields:

- Centre Code
- Centre Name
- WIP Account
- Accrual Account
- Site (dropdown menu)
- WO Type (dropdown menu)

Below the form, there are "Save" and "Back" buttons. The status bar at the bottom of the browser window shows "Open Windows" and the date "05 Apr 2018".

## SAVE DETAILS

- When you have finished adding the new production centre details, click on **Save**.



Centre Code: DBSM

Centre Name: Durban Stationery Manufacturing Centre

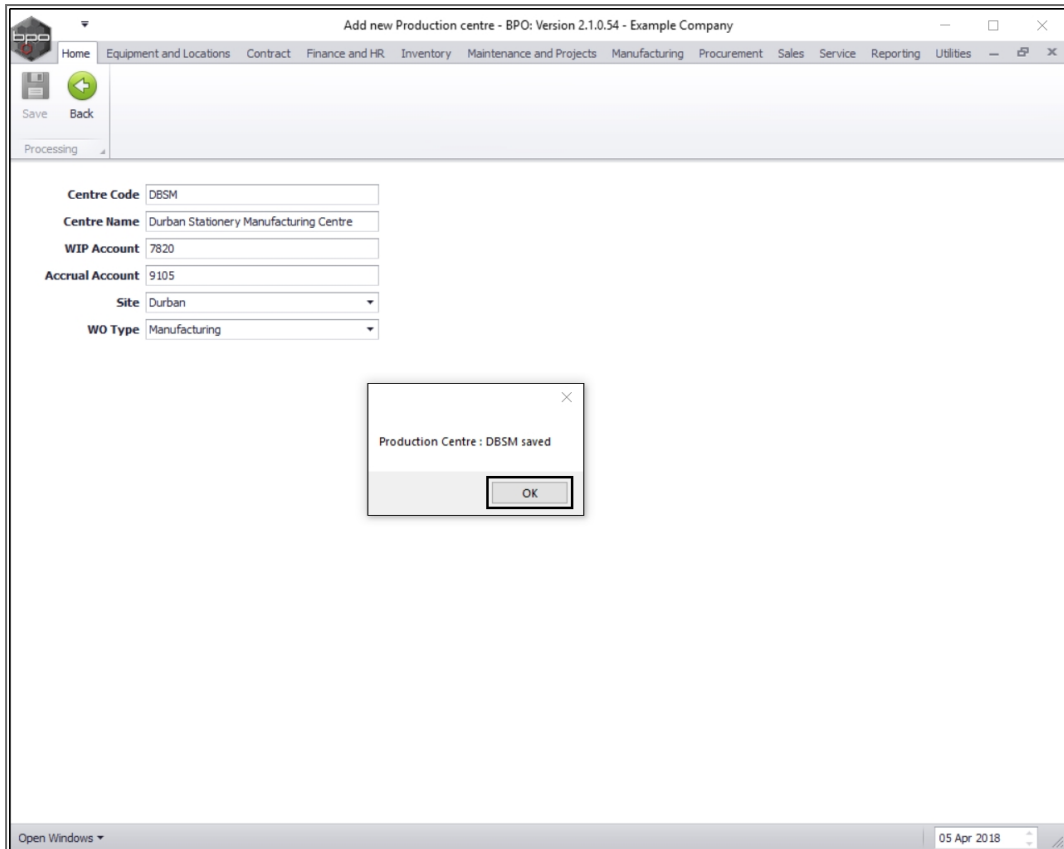
WIP Account: 7820

Accrual Account: 9105

Site: Durban

WO Type: Manufacturing

- A message box will pop up informing you that;
  - ***Production Centre: [ ] saved.***
- Click on **OK**.



## VIEW NEW PRODUCTION CENTRE

- The new production centre details will be **saved** and you will return to the **Production Centre** listing screen.
- Here you can view the new production centre details.

Production Centre - BPO: Version 2.1.0.54 - Example Company

Home | Equipment and Locations | Contract | Finance and HR | Inventory | Maintenance and Projects | Manufacturing | Procurement | Sales | Service | Reporting | Utilities

Maintenance | Format | Cur...

**Centre Code** DBSM      **WIP Account** 7820  
**Centre Name** Durban Stationery Manufacturing C      **Accrual Account** 9105  
**Site Name** Durban      **WO Type** Manufacturing

Drag a column header here to group by that column

SiteName	ProductionCentreCode	ProductionCentreName	ProductionWIPAccount	ProdAccrualAccount	ProductionWOType	WOTypeDesc	Status
Durban	HOP	Head Office Production Centre	7820	9100	MN	Manufacturing	A
Durban	PTPC	Pretoria Toner Production Centre	7810	9100	MN	Manufacturing	I
Durban	PTPC	Pretoria Toner Production Centre	7810	9100	MN	Manufacturing	I
Durban	DPTC	Durban Toner Production Centre	7800	9101	TON	Toner Required	I
Durban	PPPC	Pretoria Paper Production Centre	7810	9100	MN	Manufacturing	I
Durban	DTPC	Pretoria Toner Production Centre	7810	9100	MN	Manufacturing	I
Durban	DDPC	Durban Drum Production Centre	7820	9105	MN	Manufacturing	I
Durban	DBSM	Durban Stationery Manufacturing Centre	7820	9105	MN	Manufacturing	A

Open Windows | 05 Apr 2018

MNU.051.003