

MANUFACTURING

PRODUCTS – ADD A PRODUCT

Creating a product will link the inventory definition of the intended final product with the required bill of materials to make up that product.

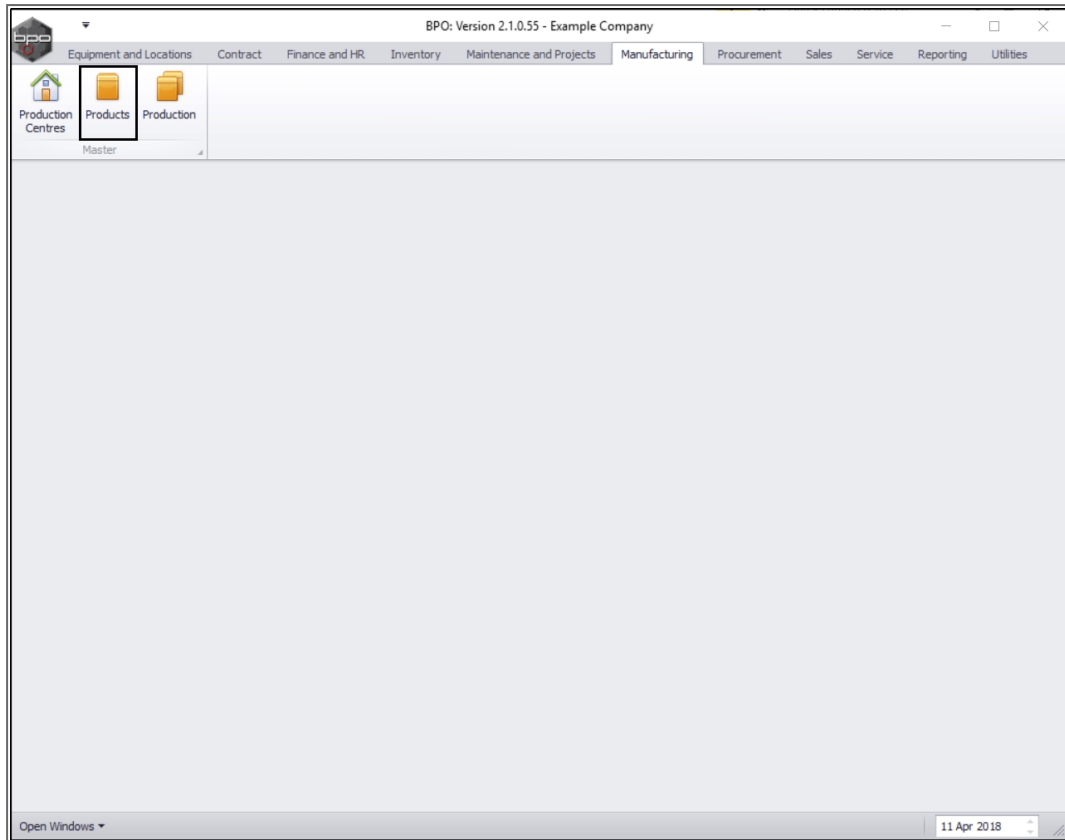
You can set up the system to be able to automatically number serialised production items.

You can use a Standard Price, or have the system calculate the price based on goods, services, time and/or expenses used during production.

Topics:

- [Add Production Part](#)
- [Product Details](#)
- [Link a BOM](#)
- [In Production](#)
- [Production History](#)

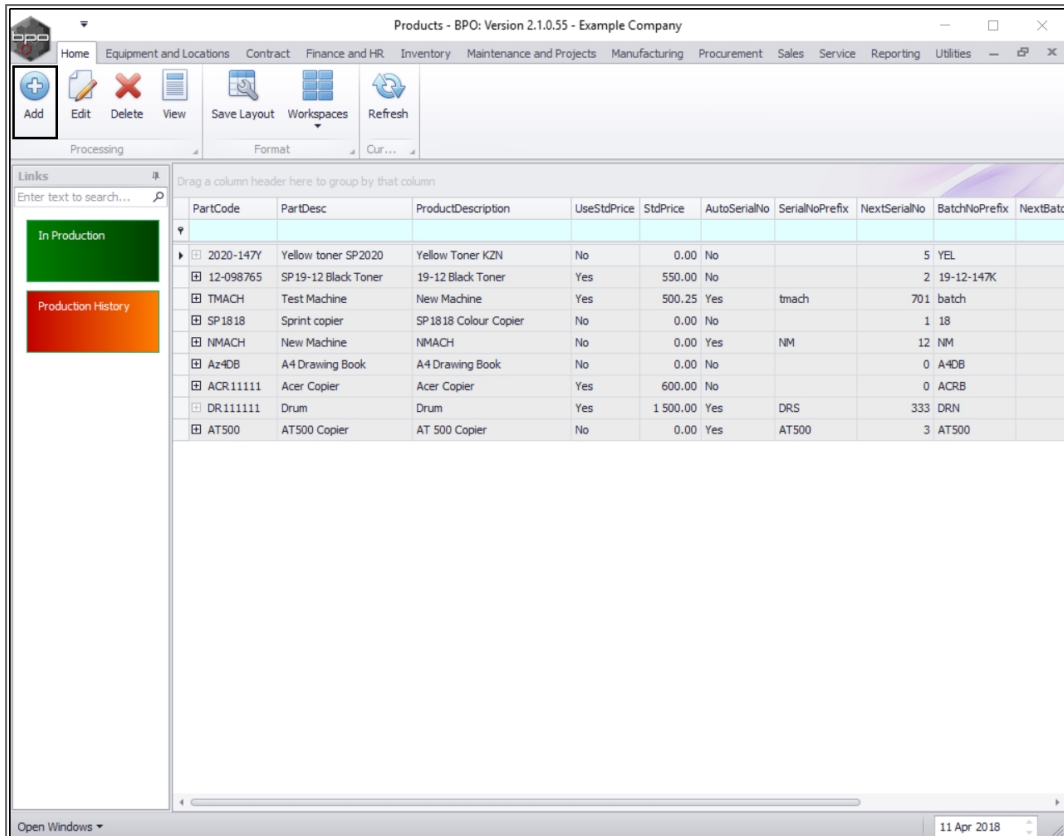
Ribbon Access: *Manufacturing > Products*



- The **Products** listing screen will be displayed.

ADD A PRODUCT

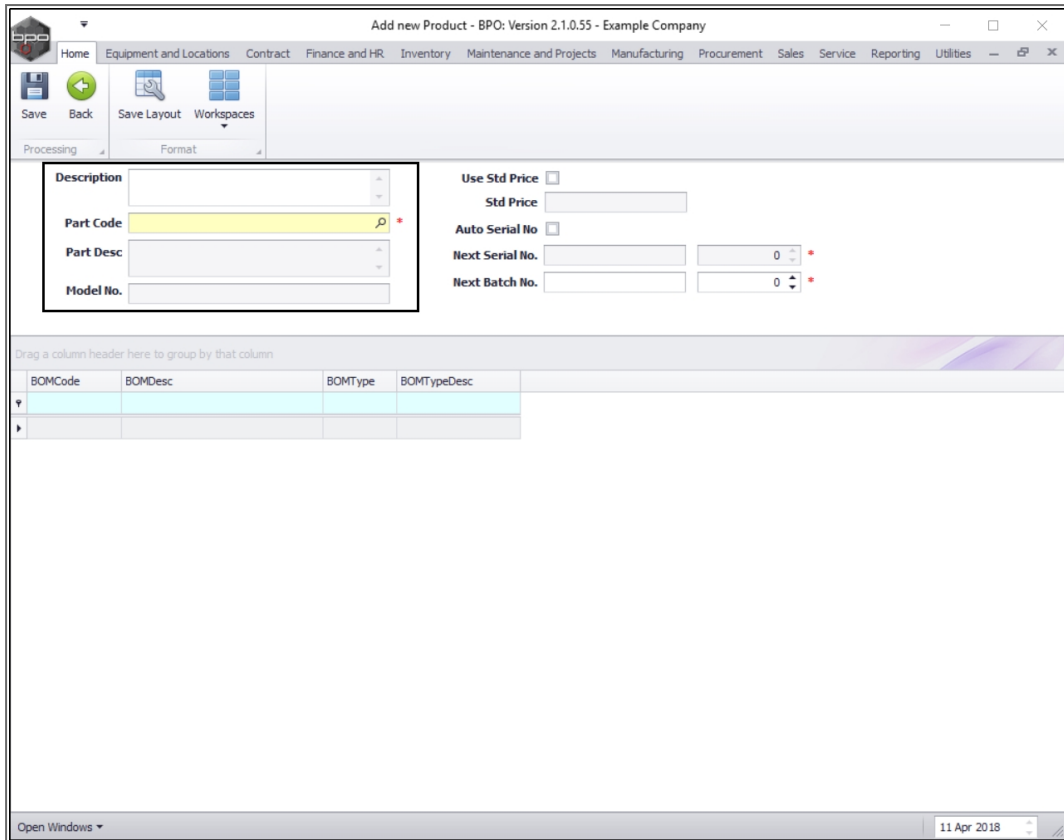
- Click on **Add**.



- The **Add new Product** screen will be displayed.

ADD PRODUCT DETAILS

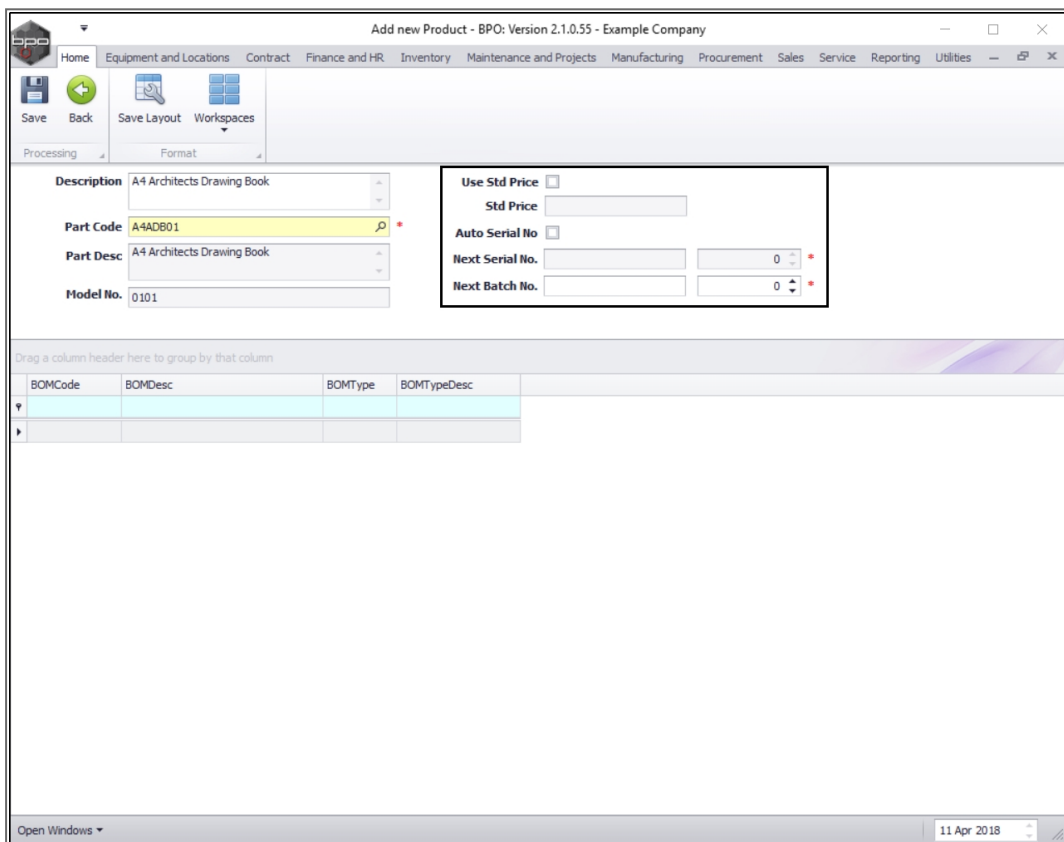
- **Description:** Click in this text box and type in a description of the product.
- **Part Code:** Click on the search button and select the inventory definition for this product code from the **Select a part** pop up screen.
- **Part Description:** This will populate according to the part code selected in the previous step.
- **Model No.:** This will populate according to the part code selection.



- **Use Std Price:** Click on this check box if you wish to use a **fixed** standard price, then type in the price in the '**Std Price**' field. This means that instead of calculating the costs of all items used to manufacture your product, you will be setting a fixed cost to the manufactured product (regardless of the actual unit costs of the consumed items).
- **Std Price:** If you selected the check box above, then type in the price in this text box.
- **Auto Serial No.:** Click on this check box if you wish to automate the serial number on an A or B-class item.
 - **Note:** When this text box is selected, the Next Serial No. text boxes will be 'activated' and you will be able to type a serial number in. If, however, this check box

is left un-ticked, then only the Next Batch No. text boxes will be 'active'.

- **Next Serial No.:** Type in the *prefix* for your serial number in the **first** text box in this row. Type in or use the arrow indicators in the *second* text box in this row to select the *next serial number* the system should use. Auto numbering will follow on from there.
- **Batch Serial No.:** Type in the prefix for you C-class batch in the **first** text box in this row. Type in or use the arrow indicators in the *second* text box in the row to select the *next serial number* the system should use. Auto numbering will follow on from there.

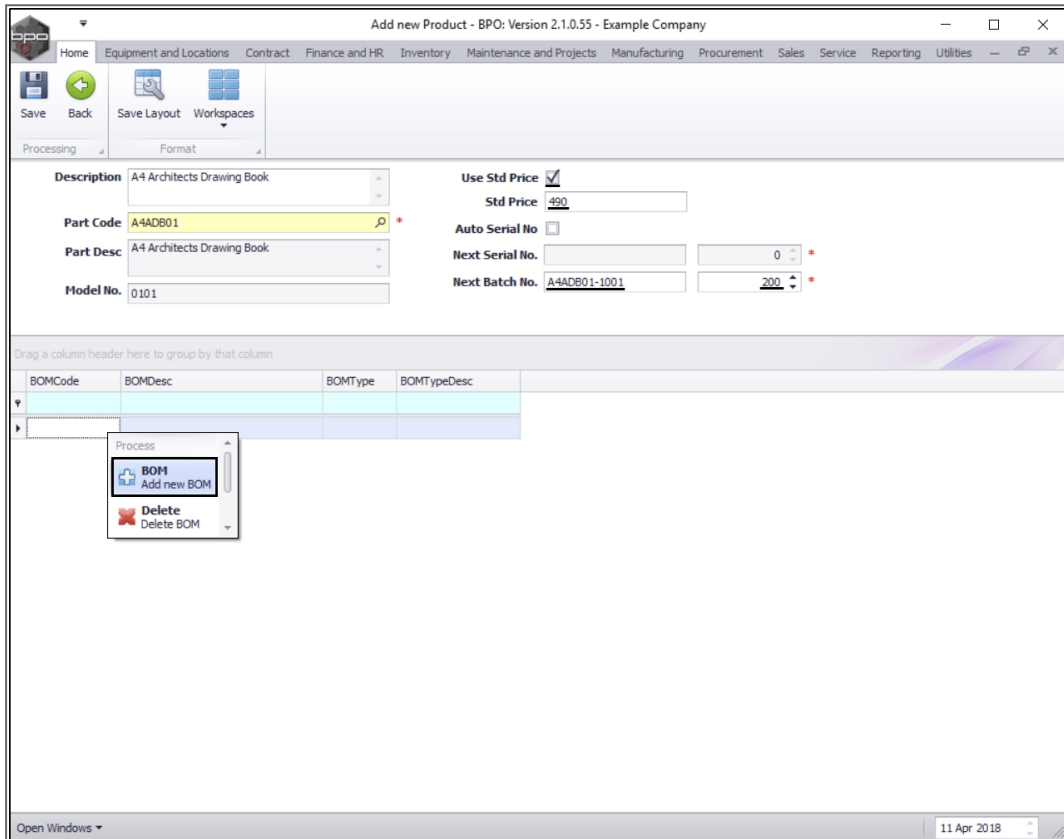


- In this image, a **Std Price** has been selected (**R490**) and a **Next Batch No.** has been set up (as this is a C-class item).

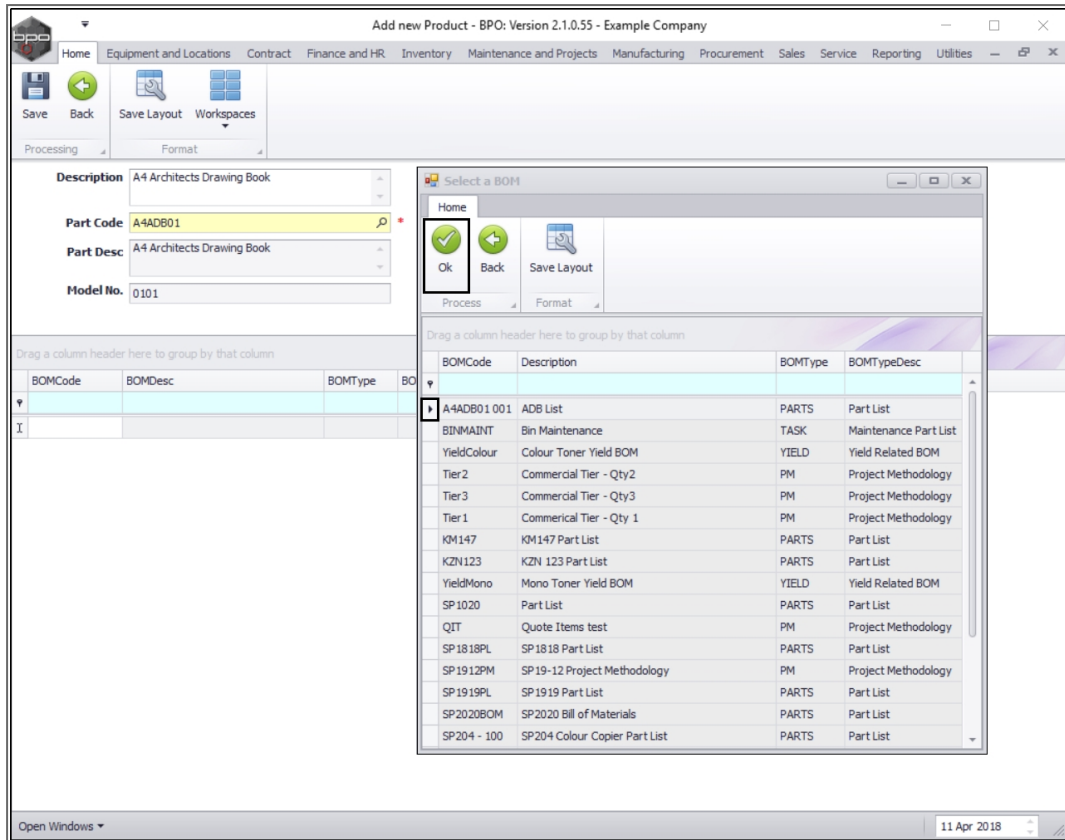
- The system will work out the subsequent batch number as being **A4ADB01-1001 201**.

LINK A BOM

- **Right click** anywhere in a row of the **BOMs** data grid.
- A **Process** menu will pop up.
- Click on **BOM - Add new BOM**.



- The **Select a BOM** screen will pop up.
- Select the **row** of the **BOM** you wish to **link** to this **product**.
- Click on **Ok**.



- The selected BOM will be **linked** and **saved** in the BOM frame data grid.
 - **Note:** You can link more than one BOM to this product.
- When you have finished linking the BOM(s), click on **Save**.

Add new Product - BPO: Version 2.1.0.55 - Example Company

Home | Equipment and Locations | Contract | Finance and HR | Inventory | Maintenance and Projects | Manufacturing | Procurement | Sales | Service | Reporting | Utilities

Save | Back | Save Layout | Workspaces

Processing | Format

Description: A4 Architects Drawing Book

Part Code: A4ADB01

Part Desc: A4 Architects Drawing Book

Model No.: 0101

Use Std Price:

Std Price: 490

Auto Serial No:

Next Serial No.: 0

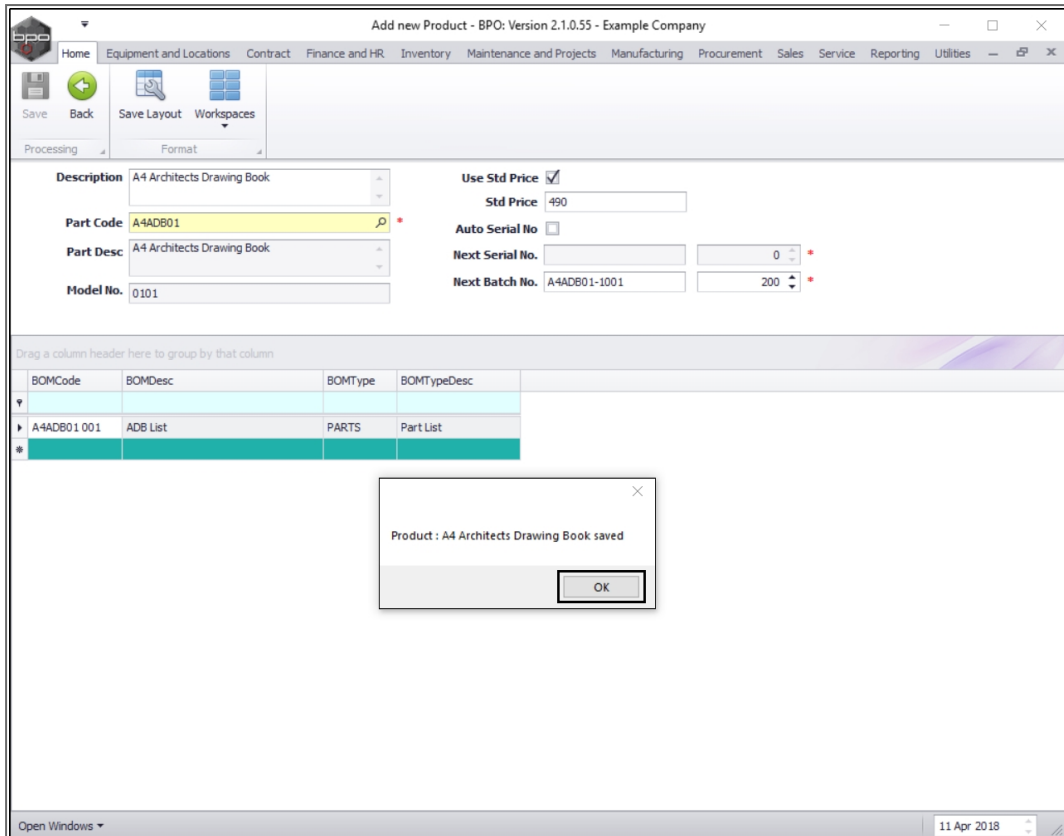
Next Batch No.: A4ADB01-1001, 200

Drag a column header here to group by that column

BOMCode	BOMDesc	BOMType	BOMTypeDesc
A4ADB01001	ADB List	PARTS	Part List

Open Windows | 11 Apr 2018

- A message box will pop up informing you that;
 - **Product: [] saved.**
- Click on **OK**.

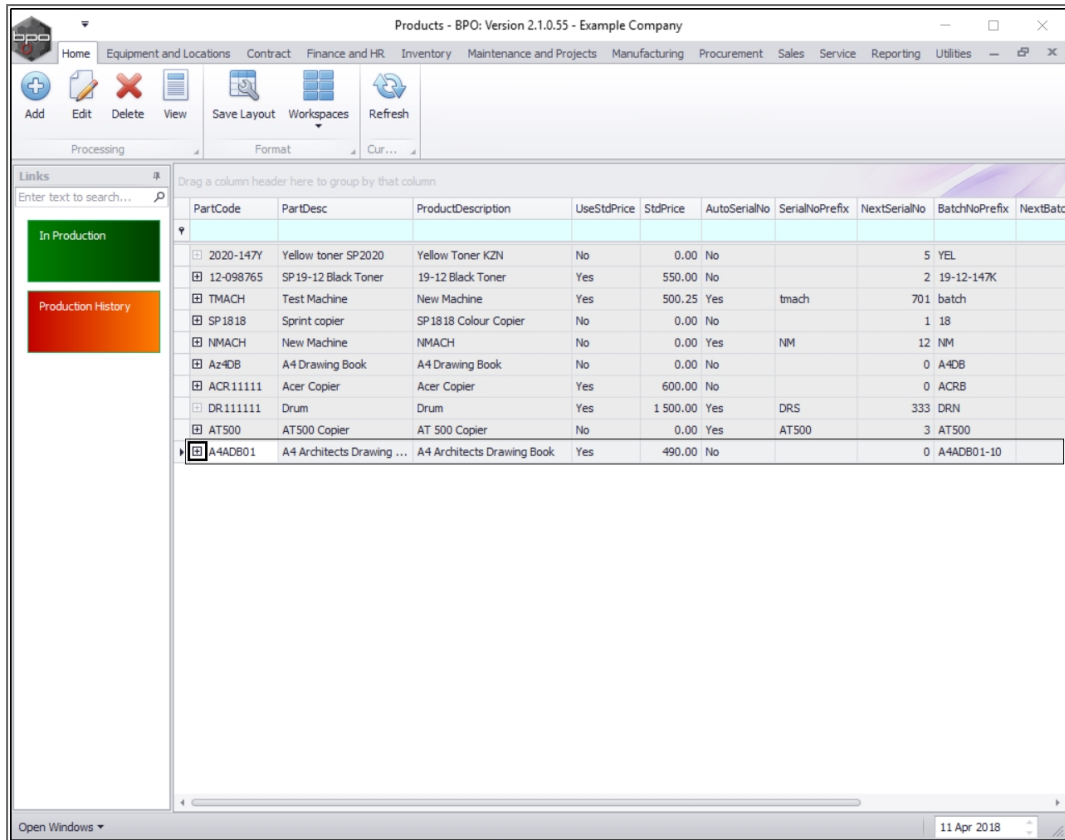


VIEW NEW PRODUCT

- You will return to the **Products** listing screen.
- Here you can view the newly linked product.

VIEW PRODUCT BOM(S)

- Click on the **expand** icon in the row of the new product.



- The **Product BOMs** frame will be expanded.
- Here you can view all the BOMs linked to this product.

VIEW PRODUCT BOM DETAILS

- Click on the **expand** icon in the **row** of the **BOM** that you wish to view the **details** of.

PartCode	PartDesc	ProductDescription	UseStdPrice	StdPrice	AutoSerialNo	SerialNoPrefix	NextSerialNo	BatchNoPrefix	NextBatchNo
2020-147Y	Yellow toner SP2020	Yellow Toner KZN	No	0.00	No			5 YEL	
12-098765	SP 19-12 Black Toner	19-12 Black Toner	Yes	550.00	No			2 19-12-147K	
TMACH	Test Machine	New Machine	Yes	500.25	Yes	tmach		701 batch	
SP 1818	Sprint copier	SP 1818 Colour Copier	No	0.00	No			1 18	
NMACH	New Machine	NMACH	No	0.00	Yes	NM		12 NM	
Az4DB	A4 Drawing Book	A4 Drawing Book	No	0.00	No			0 A4DB	
ACR.111111	Acer Copier	Acer Copier	Yes	600.00	No			0 ACRB	
DR.111111	Drum	Drum	Yes	1 500.00	Yes	DRS		333 DRN	
AT500	AT500 Copier	AT 500 Copier	No	0.00	Yes	AT500		3 AT500	
A4ADB01	A4 Architects Drawing ...	A4 Architects Drawing Book	Yes	490.00	No			0 A4ADB01-10	

fIdBOMCode	fIdBOMDesc	fIdBOMType	fIdBOMTypeDesc
A4ADB01 001	ADB List	PARTS	Part List

- The product **BOM Stock** frame will be expanded.
- Here you can view a list of all the **stock items** and their **quantities** that make up this product.

PartCode	PartDesc	ProductDescription	UseStdPrice	StdPrice	AutoSerialNo	SerialNoPrefix	NextSerialNo	BatchNoPrefix	NextBatchNo
2020-147Y	Yellow toner SP2020	Yellow Toner KZN	No	0.00	No			5 YEL	
12-098765	SP 19-12 Black Toner	19-12 Black Toner	Yes	550.00	No			2 19-12-147K	
TMACH	Test Machine	New Machine	Yes	500.25	Yes	tmach		701 batch	
SP 1818	Sprint copier	SP 1818 Colour Copier	No	0.00	No			1 18	
NMACH	New Machine	NMACH	No	0.00	Yes	NM		12 NM	
Az4DB	A4 Drawing Book	A4 Drawing Book	No	0.00	No			0 A4DB	
ACR.111111	Acer Copier	Acer Copier	Yes	600.00	No			0 ACRB	
DR.111111	Drum	Drum	Yes	1 500.00	Yes	DRS		333 DRN	
AT500	AT500 Copier	AT 500 Copier	No	0.00	Yes	AT500		3 AT500	
A4ADB01	A4 Architects Drawing ...	A4 Architects Drawing Book	Yes	490.00	No			0 A4ADB01-10	

fidBOMCode	fidBOMDesc	fidBOMType	fidBOMTypeDesc
A4ADB01 001	ADB List	PARTS	Part List

fid Inventory Code	fid Item Name	fid Quantity
A4CB	A4 Cardboard Backing	1
A4CS	A4 Clear Plastic Cover	1
A4NP	A4 Note Paper	50
Az4DB	A4 Drawing Book	0

- **Collapse** the *Product BOMs* and *BOM Stock* frames.

The screenshot shows the 'Products - BPO: Version 2.1.0.55 - Example Company' window. The main table lists various products with columns for PartCode, PartDesc, ProductDescription, UseStdPrice, StdPrice, AutoSerialNo, SerialNoPrefix, NextSerialNo, BatchNoPrefix, and NextBatchNo. The product 'A4ADB01' is selected, and its BOM (Bill of Materials) is displayed below. The BOM table has columns for fIdBOMCode, fIdBOMDesc, fIdBOMType, fIdBOMTypeDesc, fId BOM It..., fId BOMID, fId Inven..., fId Inven..., fId Item Name, and fId Quantity.

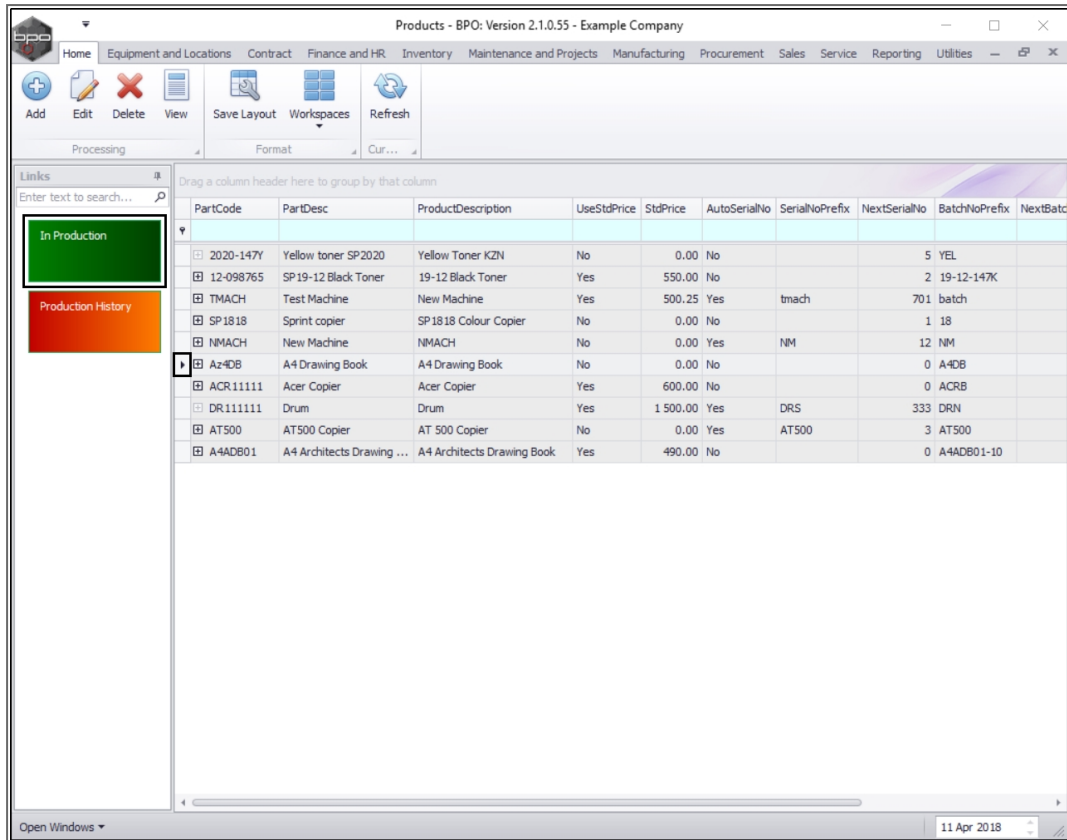
PartCode	PartDesc	ProductDescription	UseStdPrice	StdPrice	AutoSerialNo	SerialNoPrefix	NextSerialNo	BatchNoPrefix	NextBatchNo
2020-147Y	Yellow toner SP2020	Yellow Toner KZN	No	0.00	No			5 YEL	
12-098765	SP 19-12 Black Toner	19-12 Black Toner	Yes	550.00	No			2 19-12-147K	
TMACH	Test Machine	New Machine	Yes	500.25	Yes	tmach		701 batch	
SP 1818	Sprint copier	SP 1818 Colour Copier	No	0.00	No			1 18	
NMACH	New Machine	NMACH	No	0.00	Yes	NM		12 NM	
Az4DB	A4 Drawing Book	A4 Drawing Book	No	0.00	No			0 A4DB	
ACR 111111	Acer Copier	Acer Copier	Yes	600.00	No			0 ACRB	
DR 111111	Drum	Drum	Yes	1 500.00	Yes	DRS		333 DRN	
AT 500	AT500 Copier	AT 500 Copier	No	0.00	Yes	AT500		3 AT500	
A4ADB01	A4 Architects Drawing ...	A4 Architects Drawing Book	Yes	490.00	No			0 A4ADB01-10	

fIdBOMCode	fIdBOMDesc	fIdBOMType	fIdBOMTypeDesc
A4ADB01 001	ADB List	PARTS	Part List

fId BOM Ite...	fId BOMID	fId Inven...	fId Inven...	fId Item Name	fId Quantity
124	36	51	A4CS	A4 Clear Pl...	1
126	36	52	A4CB	A4 Cardbo...	1
125	36	53	A4NP	A4 Note Pa...	50
127	36	54	Az4DB	A4 Drawing...	0

IN PRODUCTION TILE

- To see if a product is currently *in production*, select the *row* of that product.
- Click on the *In Production* tile.



- The ***In Production*** listing screen will be displayed.
- Here you can see if a product is currently in production and what the details of that production run are.

In Production - BPO: Version 2.1.0.55 - Example Company

Home | Equipment and Locations | Contract | Finance and HR | Inventory | Maintenance and Projects | Manufacturing | Procurement | Sales | Service | Reporting | Utilities

Back | Save Layout | Workspaces | Reports | Refresh

Proce... | Format | View | Cur...

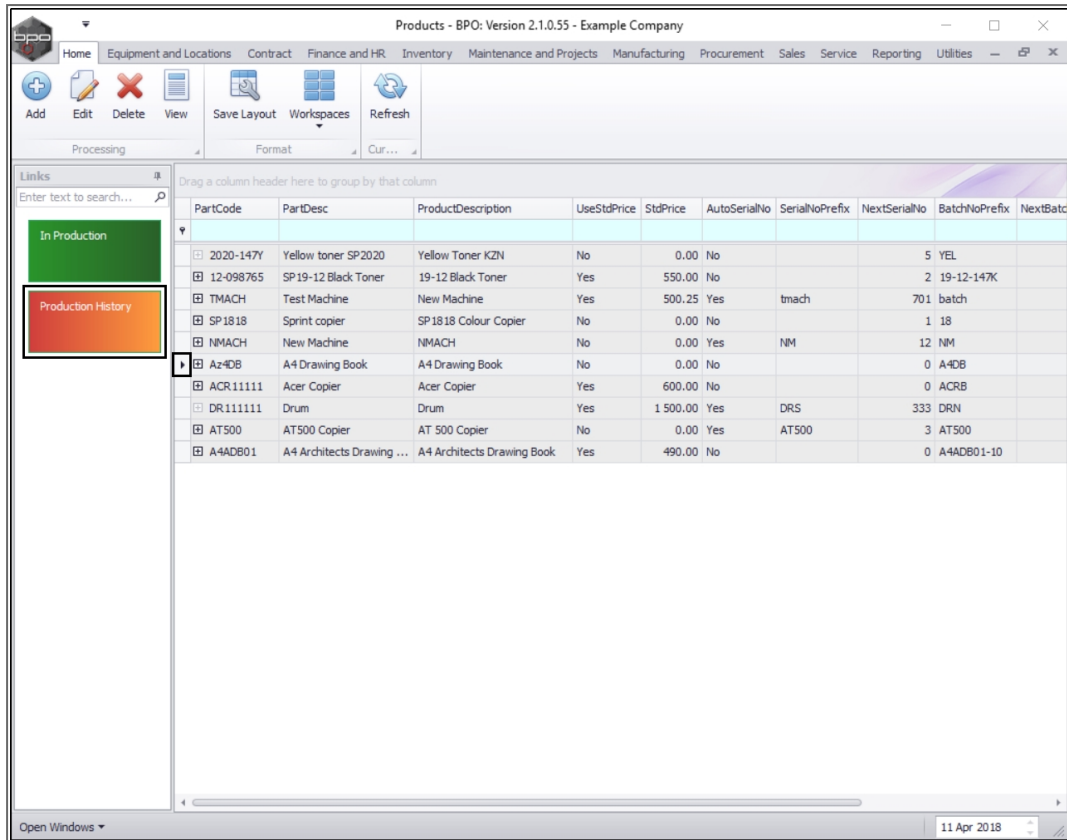
Drag a column header here to group by that column

ProductionRef	PartCode	PartDesc	ProductionForeman	StartDate	StartTime	SchedEndDate	SchedEndTime	EndDate	EndTime	PlannedQty	CompletionComments	ActualQty	St
PROD00000070	Az4DB	A4 Drawing Book	Abigail Milne	28 Nov 2017	13:38:10	29 Nov 2017	13:38:10	01 Jan 1900	00:00:00	2		2	A
PROD00000069	Az4DB	A4 Drawing Book	Belinda Sharman	28 Nov 2017	12:16:29	29 Nov 2017	12:16:29	01 Jan 1900	00:00:00	1		1	A
PROD00000039	Az4DB	A4 Drawing Book	Belinda Sharman	28 Feb 2017	18:49:38	01 Mar 2017	18:49:38	01 Jan 1900	00:00:00	2		2	A
PROD00000033	Az4DB	A4 Drawing Book	Bianca Du Toit	28 Feb 2017	08:10:52	01 Mar 2017	08:10:52	01 Jan 1900	00:00:00	1		1	A
PROD00000027	Az4DB	A4 Drawing Book	Bianca Du Toit	18 Feb 2016	14:51:10	19 Feb 2016	14:51:10	01 Jan 1900	00:00:00	1		0	A
PROD00000072	Az4DB	A4 Drawing Book	Theo Peterson	12 Apr 2001	09:00:00	12 Apr 2018	11:00:00	01 Jan 1900	00:00:00	2		2	A
PROD00000047	Az4DB	A4 Drawing Book	Belinda Sharman	02 Mar 2017	11:56:52	03 Mar 2017	11:56:52	01 Jan 1900	00:00:00	2		2	A
PROD00000046	Az4DB	A4 Drawing Book	Belinda Sharman	02 Mar 2017	11:45:56	03 Mar 2017	11:45:56	01 Jan 1900	00:00:00	1		1	A
PROD00000073	Az4DB	A4 Drawing Book	Tammy Du Toit	01 Apr 2018	09:00:00	01 Apr 2018	11:00:00	01 Jan 1900	00:00:00	2		2	A

Open Windows | 11 Apr 2018

PRODUCTION HISTORY TILE

- To view **prior** production runs for a product, select the **row** of that product.
- Click on the **Production History** tile.



- The **Production History** screen will be displayed.
- Here you can view a list of all the prior production runs.

Production History - BPO: Version 2.1.0.55 - Example Company

Home | Equipment and Locations | Contract | Finance and HR | Inventory | Maintenance and Projects | Manufacturing | Procurement | Sales | Service | Reporting | Utilities

Back | Save Layout | Workspaces | Reports | Refresh

Drag a column header here to group by that column

ProductionRef	PartCode	PartDesc	ProductionForeman	StartDate	StartTime	SchedEndDate	SchedEndTime	EndDate	EndTime	PlannedQty	CompletionComments	Act
PROD00000024	Az4DB	A4 Drawing Book	Belinda Sharman	09 Jan 2015	11:10:23	10 Jan 2015	11:10:23	09 Jan 2015	11:15:33	10	WO0000436 :	
PROD00000025	Az4DB	A4 Drawing Book	Bianca Du Toit	14 May 2015	13:23:00	15 May 2015	13:23:00	01 Jan 1900	00:00:00	1		
PROD00000026	Az4DB	A4 Drawing Book	Bianca Du Toit	04 Sep 2015	14:35:06	05 Sep 2015	14:35:06	04 Sep 2015	14:38:49	1	WO0000558 :	
PROD00000029	Az4DB	A4 Drawing Book	Belinda Sharman	24 Feb 2017	12:10:59	25 Feb 2017	12:10:59	14 Jun 2017	16:10:47	1	WO0001127:	
PROD00000053	Az4DB	A4 Drawing Book	Judith Mudzengi	06 Apr 2017	10:52:40	07 Apr 2017	10:52:40	08 Aug 2017	10:20:23	2	WO0001261:	
PROD00000054	Az4DB	A4 Drawing Book	Bianca Du Toit	20 Apr 2017	14:56:49	21 Apr 2017	14:56:49	01 Jan 1900	00:00:00	1		
PROD00000055	Az4DB	A4 Drawing Book	Ben Johnson	22 May 2017	09:31:02	23 May 2017	09:31:02	01 Jan 1900	00:00:00	1		
PROD00000056	Az4DB	A4 Drawing Book	Bianca Du Toit	08 Jun 2017	11:36:58	09 Jun 2017	11:36:58	01 Jan 1900	00:00:00	10		
PROD00000058	Az4DB	A4 Drawing Book	Belinda Sharman	09 Jun 2017	08:40:32	10 Jun 2017	08:40:32	01 Jan 1900	00:00:00	1		
PROD00000060	Az4DB	A4 Drawing Book	Judith Mudzengi	13 Jun 2017	15:43:16	14 Jun 2017	15:43:16	01 Jan 1900	00:00:00	1		
PROD00000061	Az4DB	A4 Drawing Book	Judith Mudzengi	15 Jun 2017	11:38:07	16 Jun 2017	11:38:07	01 Jan 1900	00:00:00	1		
PROD00000062	Az4DB	A4 Drawing Book	Bianca Du Toit	21 Jun 2017	14:17:09	22 Jun 2017	14:17:09	08 Aug 2017	09:59:45	1	WO0001500:	
PROD00000063	Az4DB	A4 Drawing Book	Bianca Du Toit	02 Aug 2017	09:24:39	03 Aug 2017	09:24:39	02 Aug 2017	09:29:13	1	WO0001538:	
PROD00000067	Az4DB	A4 Drawing Book	Bianca Du Toit	02 Aug 2017	10:33:39	03 Aug 2017	10:33:39	02 Aug 2017	14:46:01	1	WO0001542:	
PROD00000068	Az4DB	A4 Drawing Book	Bianca Du Toit	07 Aug 2017	12:13:48	08 Aug 2017	12:13:48	07 Aug 2017	12:15:05	1	WO0001551:	
PROD00000057	Az4DB	A4 Drawing Book	Belinda Sharman	08 Jun 2017	11:44:28	09 Jun 2017	11:44:28	01 Jan 1900	00:00:00	10		
PROD00000064	Az4DB	A4 Drawing Book	Bianca Du Toit	02 Aug 2017	09:34:12	03 Aug 2017	09:34:12	02 Aug 2017	09:41:44	1	WO0001539:	

Open Windows | 11 Apr 2018

MNU.051.005

