

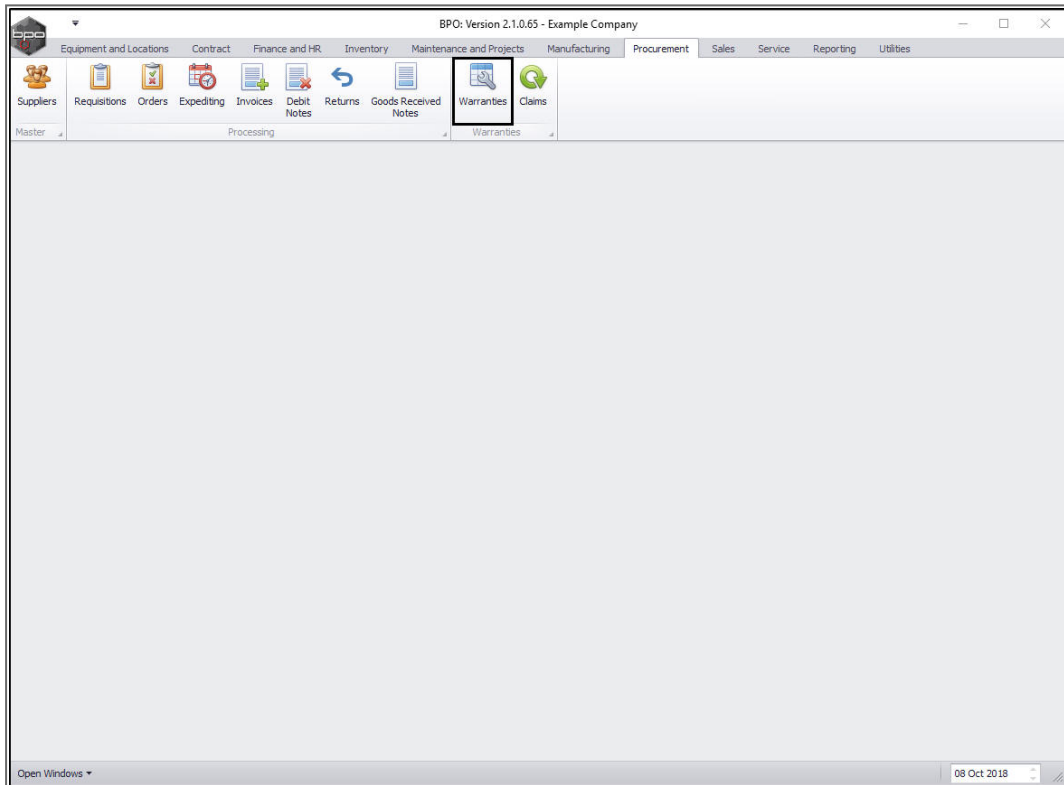
PROCUREMENT

VIEW ACTIVE WARRANTIES

In the Warranties listing screen you can view all the **Active** and **Expired** warranties on the system.

You can also use the Functions tiles to view the **Linked Items** and **Warranty Claims**.

Ribbon Access: *Procurement > Warranties*



- The **Warranties** listing screen will be displayed.

Select the Status

- Select the **status**.
 - This should be set to **Active**.

WarrantyCode	Description	TypeDesc	WarrantyPeriod	PeriodTypeDesc	MeterUnits	UnitTypeDesc	MetersAggregated	Status
24MSW	24 Month Supplier Warranty	Supplier Warranty	24 Months		10000	Copies made	No	A
12MSW	12 Month Supplier Warranty	Supplier Warranty	12 Months		50000	Copies made	No	A
1YSW	1 Year Supplier Warranty	Supplier Warranty	1 Years		56000	Copies made	Yes	A
3MSW	3 Months Service Warranty	Supplier Warranty	6 Months		50000	Copies made	No	A
wct	warranty code test	Supplier Warranty	500 Months		0		No	A
RET3	Retest	Supplier Warranty	1 Years		10000		Yes	A
TES	Testing	Supplier Warranty	2 Months		5000	Copies made	No	A
TES1	TEST	Supplier Warranty	6 Months		0		No	A
F1YW	Full 1 Yr Warranty - Unit and Parts	Supplier Warranty	1 Years		50000	Copies made	No	A
6MSW	Six Month Supplier Warranty	Supplier Warranty	6 Months		5000	Copies made	No	A

VIEW ACTIVE WARRANTIES

- Click on the **row selector** in front of the **warranty** that you wish to view the details of.
- Click on **View**.

WarrantyCode	Description	TypeDesc	WarrantyPeriod	PeriodTypeDesc	MeterUnits	UnitTypeDesc	MetersAggregated	Status
24MSW	24 Month Supplier Warranty	Supplier Warranty	24 Months	24 Months	10000 Copies made	No	No	A
12MSW	12 Month Supplier Warranty	Supplier Warranty	12 Months	12 Months	50000 Copies made	No	No	A
1YSW	1 Year Supplier Warranty	Supplier Warranty	1 Years	1 Years	56000 Copies made	Yes	Yes	A
3MSW	3 Months Service Warranty	Supplier Warranty	6 Months	6 Months	50000 Copies made	No	No	A
wct	warranty code test	Supplier Warranty	500 Months	500 Months	0	No	No	A
RET3	Retest	Supplier Warranty	1 Years	1 Years	10000	Yes	Yes	A
TES	Testing	Supplier Warranty	2 Months	2 Months	5000 Copies made	No	No	A
TES1	TEST	Supplier Warranty	6 Months	6 Months	0	No	No	A
F1YW	Full 1 Yr Warranty - Unit and Parts	Supplier Warranty	1 Years	1 Years	50000 Copies made	No	No	A
6MSW	Six Month Supplier Warranty	Supplier Warranty	6 Months	6 Months	5000 Copies made	No	No	A

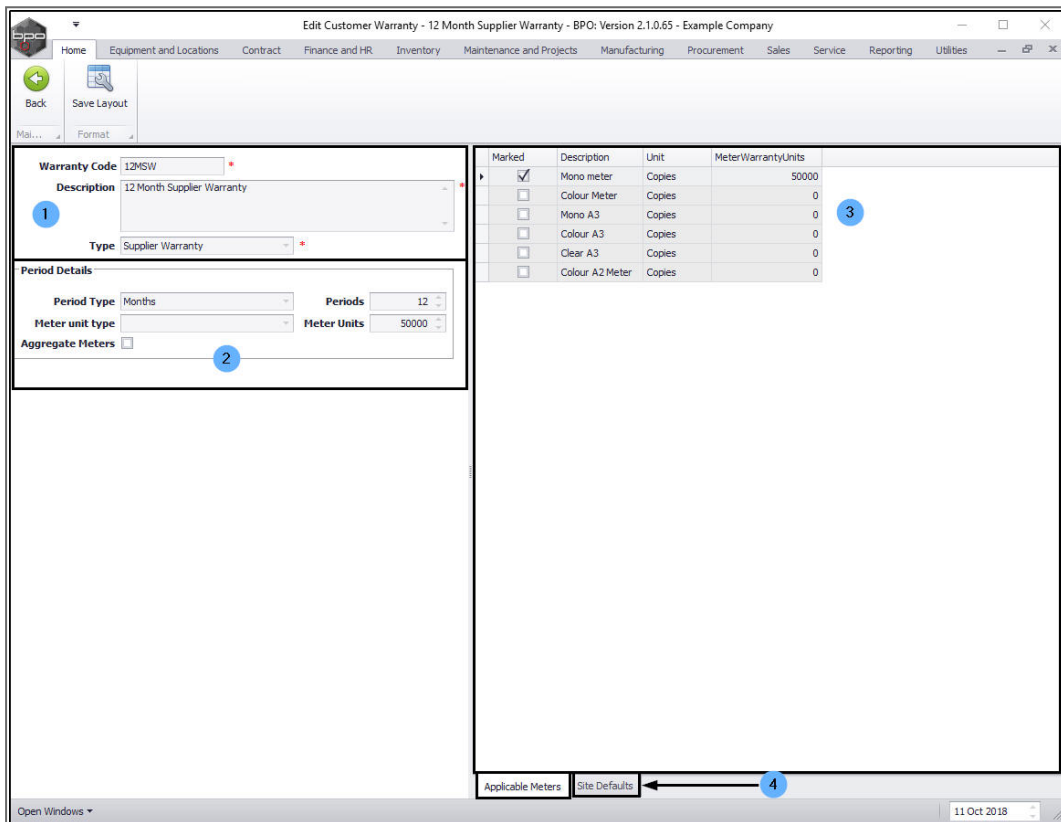
The **Edit Customer Warranty** screen will be displayed. (This is a view only screen, there is no Save button, only contains a **Back** button - so it is not editable).

VIEW ACTIVE WARRANTY DETAILS, PERIOD DETAILS AND APPLICABLE METERS

Here you can view:

- The **Warranty** details frame which contains:
 - Warranty Code
 - Warranty Description and
 - Type
- The **Period Details** frame, which contains:

- Period Type
 - Periods
 - Meter unit type
 - Meter Units
 - Aggregate Meters (flag - checkbox)
3. The **Applicable Meters** frame which contains:
- Details of the meters linked to this warranty.
4. Click on the **Site Defaults** tab.

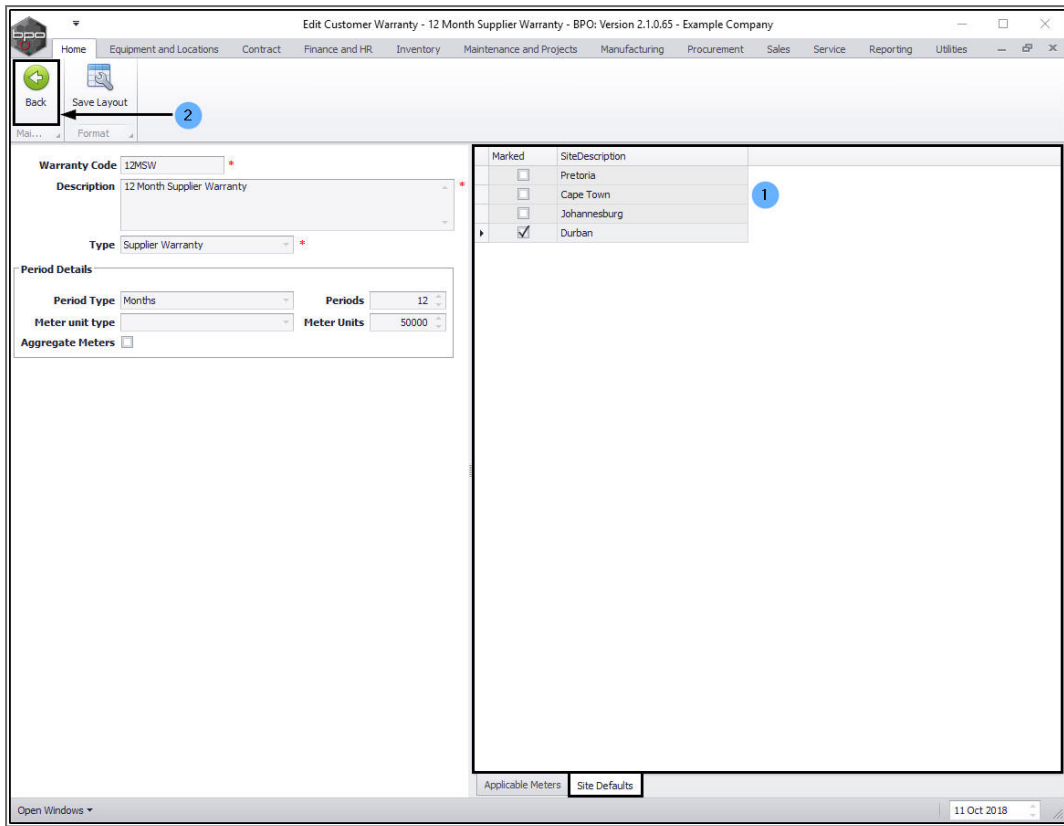


VIEW ACTIVE WARRANTY SITE DEFAULTS

The **Site Defaults** frame will be brought to the fore.

Here you can view:

1. Which sites this warranty is linked to.
2. Click on **Back** to return to the **Warranties** listing screen.



VIEW LINKED ITEMS

In the Active **Warranties** listing frame,

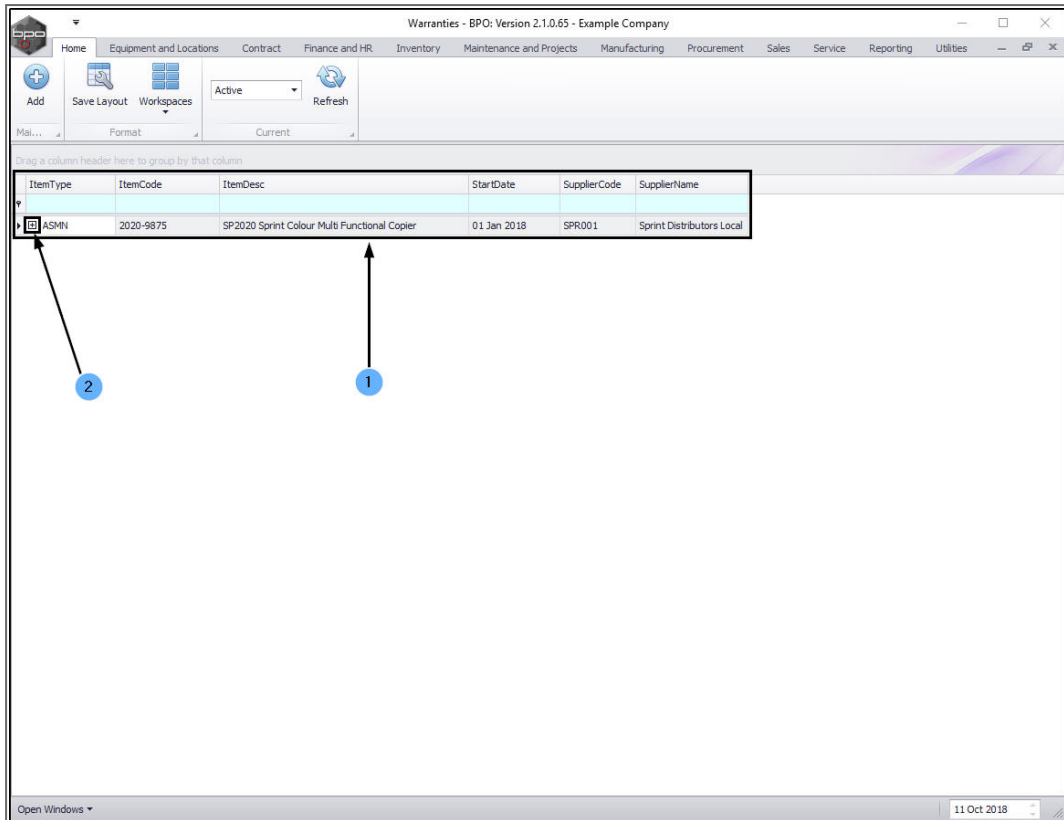
- Click on the **row selector** in front of the **warranty** that you wish to view the **linked items** of.
- Click on the **Linked Items** tile.

WarrantyCode	Description	TypeDesc	WarrantyPeriod	PeriodTypeDesc	MeterUnits	UnitTypeDesc	MetersAggregated	Status
24MSW	24 Month Supplier Warranty	Supplier Warranty	24 Months		10000	Copies made	No	A
12MSW	12 Month Supplier Warranty	Supplier Warranty	12 Months		50000	Copies made	No	A
1YSW	1 Year Supplier Warranty	Supplier Warranty	1 Years		56000	Copies made	Yes	A
3MSW	3 Months Service Warranty	Supplier Warranty	6 Months		50000	Copies made	No	A
wct	warranty code test	Supplier Warranty	500 Months		0		No	A
RET3	Retest	Supplier Warranty	1 Years		10000		Yes	A
TES	Testing	Supplier Warranty	2 Months		5000	Copies made	No	A
TES1	TEST	Supplier Warranty	6 Months		0		No	A
F1YW	Full 1 Yr Warranty - Unit and Parts	Supplier Warranty	1 Years		50000	Copies made	No	A
6MSW	Six Month Supplier Warranty	Supplier Warranty	6 Months		5000	Copies made	No	A

1. The **Warranties** screen will now display a list of the **Item Type(s)**, **Code (s)** and **Description(s)** linked to the selected warranty. You can also view the **Start Date**, **Supplier Code** and **Supplier Name**.

VIEW LINKED ITEM METERS

2. Click on the **expand** button in the row of a selected item.



ItemType	ItemCode	ItemDesc	StartDate	SupplierCode	SupplierName
ASMIN	2020-9875	SP2020 Sprint Colour Multi Functional Copier	01 Jan 2018	SPR001	Sprint Distributors Local

- The **Item Meters** frame will be expanded.
 - Here you can view the linked item meters and their **Warranty Units, Readings** and **Meter Balance**.
- Close the screen to return to the **Warranties** listing screen.

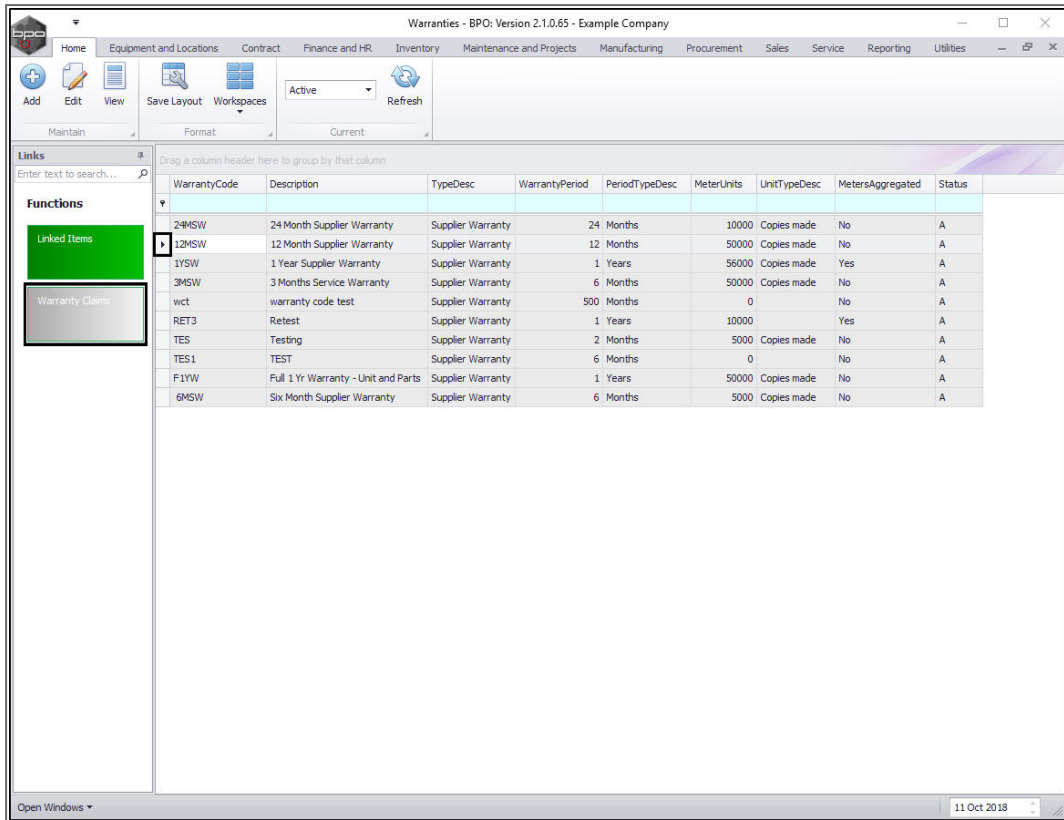
ItemType	ItemCode	ItemDesc	StartDate	SupplierCode	SupplierName
ASMN	2020-9875	SP2020 Sprint Colour Multi Functional Copier	01 Jan 2018	SPR001	Sprint Distributors Local

MeterDefCode	MeterDesc	MeterWarrantyUnits	StartReading	CurrentReading	MeterBalance	Unit
Mono	Mono meter	3000	900.00	900.00	3 000.00	Copies
Colour	Colour Meter	2000	1 000.00	1 000.00	2 000.00	Copies

VIEW WARRANTY CLAIMS

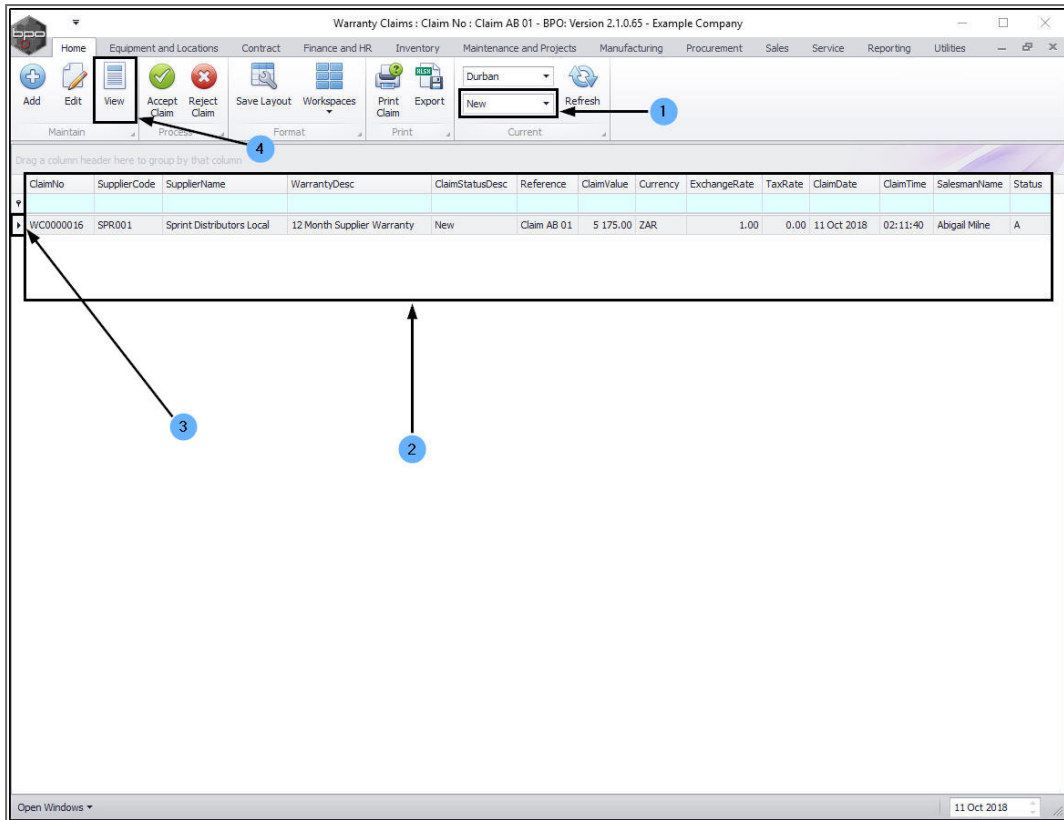
In the Active **Warranties** listing frame,

- Click on the **row selector** in front of the **warranty** that you wish to view the **warranty claims** of.
- Click on the **Warranty Claims** tile.



The **Warranty Claims** screen will be displayed.

1. This will open in the **New** status.
2. Here you can view a list of claims linked to this warranty type.
3. Click on the **row selector** in front of the warranty claim you wish to view.
4. Click on **View**.



The **View Claim - []** screen will be displayed.

Here you can view details regarding:

1. The **Supplier** linked to this warranty claim.
2. The linked **Addresses** and **Related References** (linked to a Call or Contract etc).
3. The **equipment item** linked to this warranty claim.
4. Click on **Back** to return to the **Warranty Claims** screen.

View Claim - WC0000016 - BPC: Version 2.1.0.65 - Example Company

Supplier: Sprint Distributors Local
 Warranty Desc: 12 Month Supplier Warranty
 Claim Status: New
 Salesman: Abigail Milne
 Reference: Claim AB 01
 Claim Date/Time: 11 Oct 2018 2:11:40 AM
 Currency: South African Rand
 Tax Rate: 0
 Exchange Rate: 1

RefType	ReferenceType	ReferenceNo
ASMN	Serial No	2020-103056
CALL	Call Reference	CN0000567
CTRT	Contract No	

SourceType	ItemType	ItemCode	ItemDescription	ClaimLineDescription	Quantity	QuantityPerUOP	UnitType	UnitCost	Markup	Discount	UnitSellingPrice	Ware
ASMN	BNVN	SP2020	SP2020 Sprint Colour Multi Functional Copier	2020-103056 - SP2020 Sprint Colour Multi Functional Copier	1.00	0.00	ea	4 500.00	0.00	0.00	4 500.00	

Qty	1.00	Sub Total	4 500.00
		VAT	675.00
		Grand Total	5 175.00

VIEW EXPIRED WARRANTIES

- In the **Warranties** listing screen, click on the **drop-down arrow** in the **Status** field.

Warranties - BPO: Version 2.1.0.66 - Example Company

Home | Equipment and Locations | Contract | Finance and HR | Inventory | Maintenance and Projects | Manufacturing | Procurement | Sales | Service | Reporting | Utilities

Active | Refresh

Links: Enter text to search...

Functions: Linked Items, Warranty Claims

WarrantyCode	Description	TypeDesc	WarrantyPeriod	PeriodTypeDesc	MeterUnits	UnitTypeDesc	MetersAggregated	Status
24MSW	24 Month Supplier Warranty	Supplier Warranty	24 Months	10000	Copies made	No	A	
12MSW	12 Month Supplier Warranty	Supplier Warranty	12 Months	50000	Copies made	No	A	
1YSW	1 Year Supplier Warranty	Supplier Warranty	1 Years	56000	Copies made	Yes	A	
3MSW	3 Months Service Warranty	Supplier Warranty	6 Months	50000	Double Sided ...	No	A	
wct	warranty code test	Supplier Warranty	500 Months	0		No	A	
RET3	Retest	Supplier Warranty	1 Years	10000		Yes	A	
TES	Testing	Supplier Warranty	2 Months	5000	Copies made	No	A	
TES1	TEST	Supplier Warranty	6 Months	0		No	A	
F1YW	Full 1 Yr Warranty - Unit and Parts	Supplier Warranty	1 Years	50000	Copies made	No	A	
6MSW	Six Month Supplier Warranty	Supplier Warranty	6 Months	5000	Copies made	No	A	

Open Windows | 21 Oct 2018

- Click on **Expired** in the drop-down list.

Warranties - BPO: Version 2.1.0.66 - Example Company

Home | Equipment and Locations | Contract | Finance and HR | Inventory | Maintenance and Projects | Manufacturing | Procurement | Sales | Service | Reporting | Utilities

Active

Status: A Active, E Expired

WarrantyCode	Description	Supplier	WarrantyPeriod	PeriodTypeDesc	MeterUnits	UnitTypeDesc	MetersAggregated	Status
24MSW	24 Month Supplier Warranty	Supplier Warranty	24 Months	Months	10000	Copies made	No	A
12MSW	12 Month Supplier Warranty	Supplier Warranty	12 Months	Months	50000	Copies made	No	A
1YSW	1 Year Supplier Warranty	Supplier Warranty	1 Years	Years	56000	Copies made	Yes	A
3MSW	3 Months Service Warranty	Supplier Warranty	6 Months	Months	50000	Double Sided ...	No	A
wct	warranty code test	Supplier Warranty	500 Months	Months	0		No	A
RET3	Retest	Supplier Warranty	1 Years	Years	10000		Yes	A
TES	Testing	Supplier Warranty	2 Months	Months	5000	Copies made	No	A
TES1	TEST	Supplier Warranty	6 Months	Months	0		No	A
F1YW	Full 1 Yr Warranty - Unit and Parts	Supplier Warranty	1 Years	Years	50000	Copies made	No	A
6MSW	Six Month Supplier Warranty	Supplier Warranty	6 Months	Months	5000	Copies made	No	A

Open Windows | 21 Oct 2018

- If there are any expired warranties, they will be displayed in this screen.

WarrantyCode	Description	TypeDesc	WarrantyPeriod	PeriodTypeDesc	MeterUnits	UnitTypeDesc	MetersAggregated	Status
--------------	-------------	----------	----------------	----------------	------------	--------------	------------------	--------

MNU.069.003