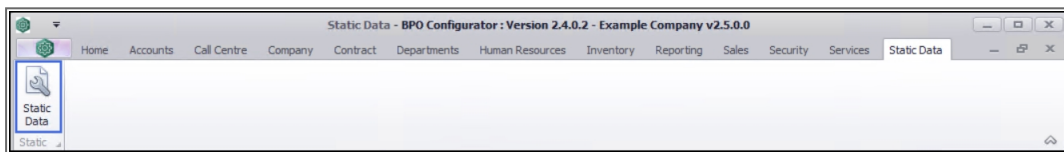


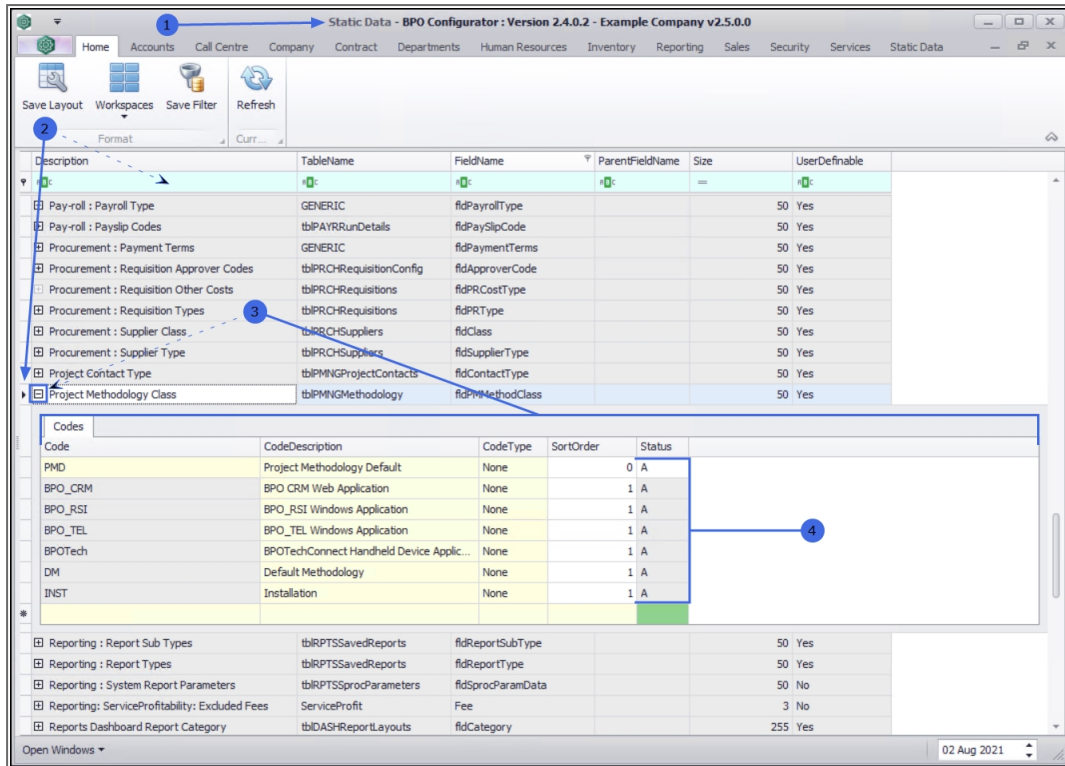
# STATIC DATA

## STATIC DATA - PROJECT METHODOLOGY CLASS

Ribbon Access: *Configurator > Static Data > Static Data*

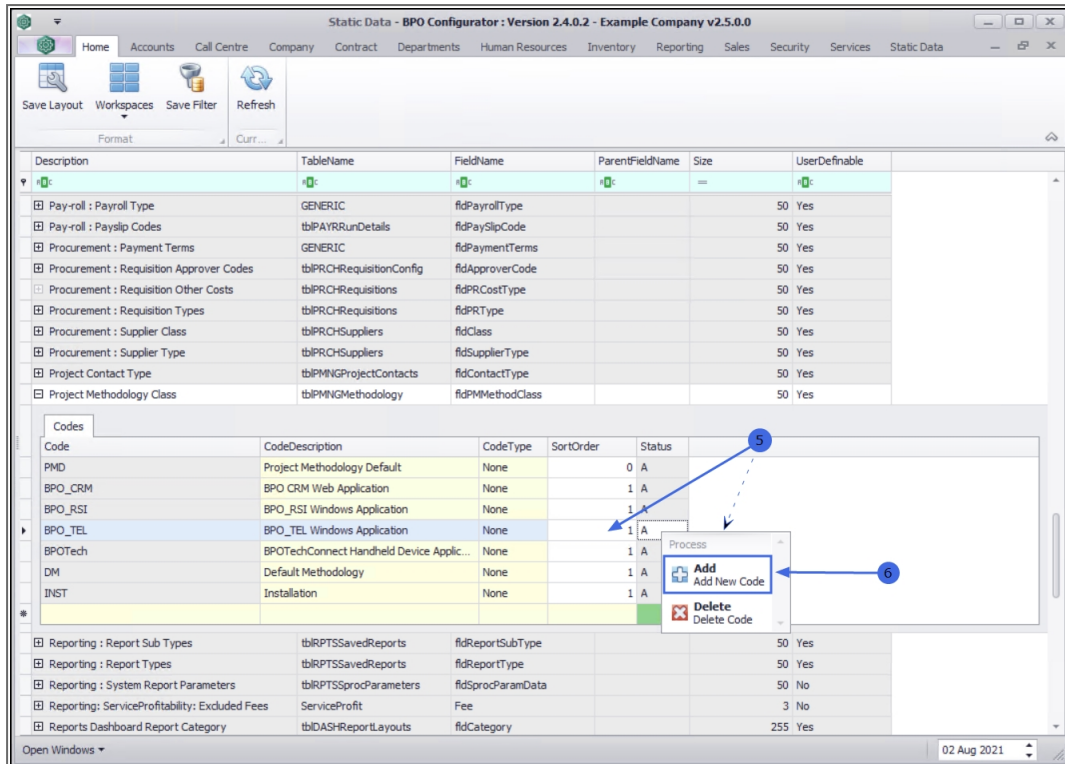


1. The **Static Data** listing screen will be displayed.
2. Use the **filter row** or **scroll down** the list until you find the **Project Methodology Class** row.
3. Click on the **expand** icon to display the Project Methodology Class **Codes** frame.
4. A list of the **project methodology class codes** currently on the system will be listed



## ADD PROJECT METHODOLOGY CLASS CODE

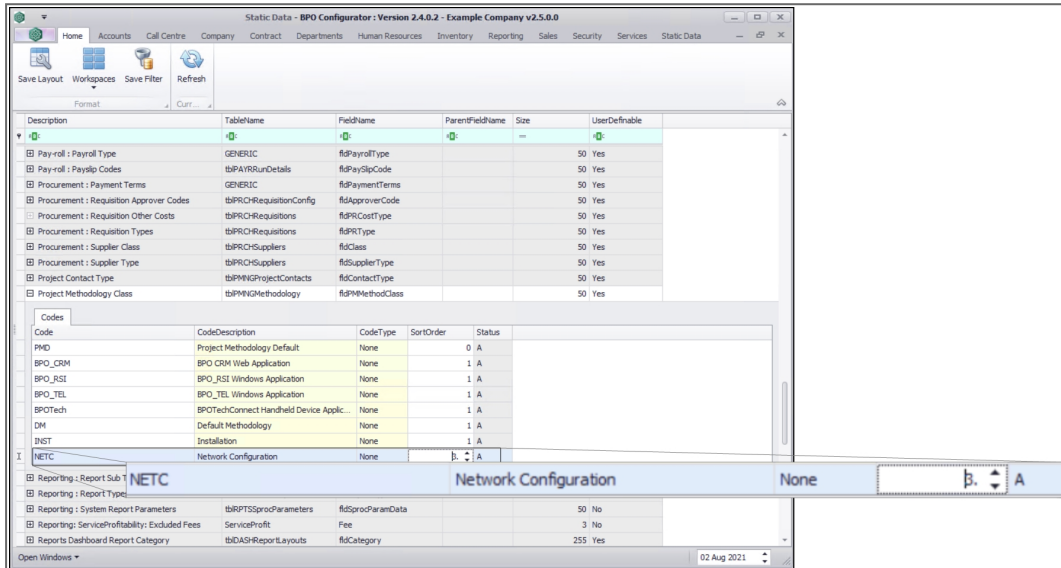
5. **Right click** anywhere in a **row** of the **Codes** data grid.
6. A **Process** menu will pop up.
7. Click on **Add** - Add New Code.



5. The **final row** in the **Codes** data grid will be '**activated**'.

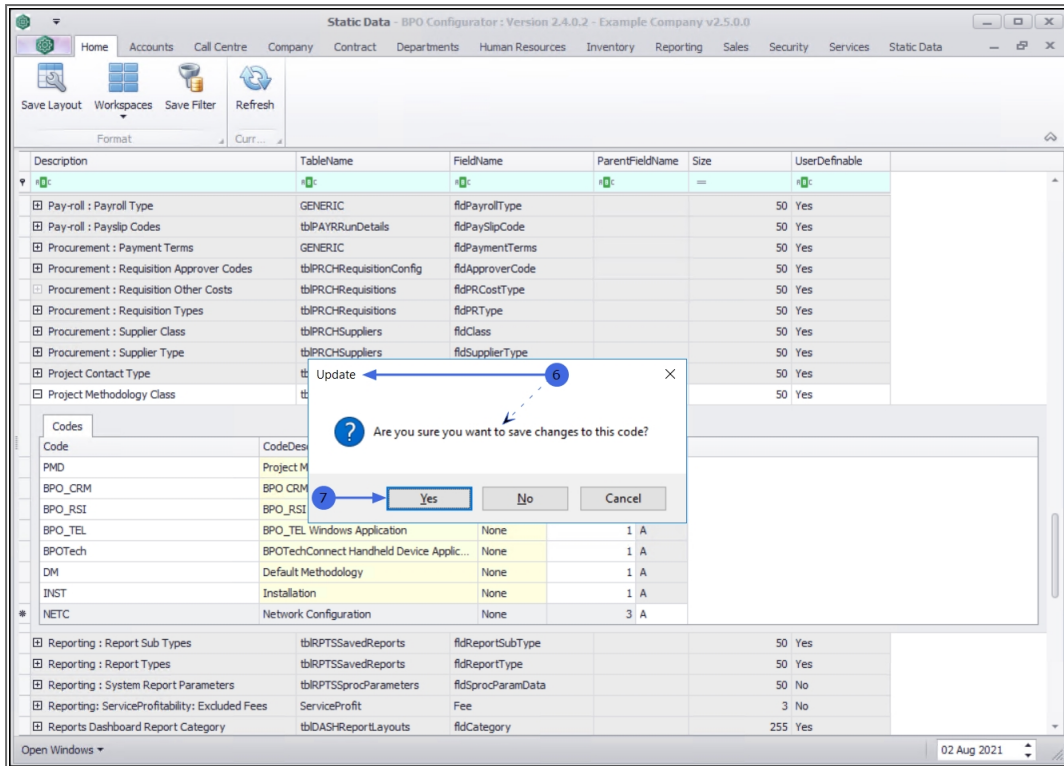
- **Code:** Click in the text box and type the code specific for the new project methodology class.
- **Code Description:** Click in the text box and type a description for the project methodology class code.
- **Code Type:** This field will auto populate with **None** and can remain as is.
- **Status:** The status field will auto populate with **A** - Active.
- **Sort Order:** Click in the text box to either type in or use the arrow indicators to select the sort order for the project methodology class code.

**Note:** The *sort order* is the order in which this will appear in the project methodology class code drop-down list in BPO. If each project methodology class code has the number **1**, then the drop-down list will usually default to an alphabetical order in BPO. If, for example it is numbered **3**, then it will appear **3rd** in the drop-down list in BPO.



When you have finished adding the new project methodology class code details, press **Enter**.

6. You will receive the **Update** message requesting;
  - **Are you sure you want to save changes to this code?**
7. Click on **Yes** to proceed.



8. The new project methodology class code is **saved** and a **new row** will be added to the **Codes** data grid.
9. **Collapse** the Codes frame.

Static Data - BPO Configurator - Version 2.4.0.2 - Example Company v2.5.0.0

Home Accounts Call Centre Company Contract Departments Human Resources Inventory Reporting Sales Security Services Static Data

Save Layout Workspaces Save Filter Refresh

Format Curr...

| Description                              | TableName               | FieldName        | ParentFieldName | Size | UserDefinable |
|--|-------------------------|------------------|-----------------|------|---------------|
| Pay-roll : Payroll Type                  | GENERIC                 | fldPayrollType   |                 | 50   | Yes           |
| Pay-roll : Payslip Codes                 | tbPAYRRunDetails        | fldPaySlipCode   |                 | 50   | Yes           |
| Procurement : Payment Terms              | GENERIC                 | fldPaymentTerms  |                 | 50   | Yes           |
| Procurement : Requisition Approver Codes | tbPRCHRequisitionConfig | fldApproverCode  |                 | 50   | Yes           |
| Procurement : Requisition Other Costs    | tbPRCHRequisitions      | fldPRCostType    |                 | 50   | Yes           |
| Procurement : Requisition Types          | tbPRCHRequisitions      | fldPRTType       |                 | 50   | Yes           |
| Procurement : Supplier Class             | tbPRCHSuppliers         | fldClass         |                 | 50   | Yes           |
| Procurement : Supplier Type              | tbPRCHSuppliers         | fldSupplierType  |                 | 50   | Yes           |
| Project Contact Type                     | tbIPMNGProjectContacts  | fldContactType   |                 | 50   | Yes           |
| Project Methodology Class                | tbIPMNGMethodology      | fldPMMethodClass |                 | 50   | Yes           |

Codes

| Code    | CodeDescription                          | CodeType | SortOrder | Status |
|---------|--|----------|-----------|--------|
| PMD     | Project Methodology Default              | None     | 0         | A      |
| BPO_CRM | BPO CRM Web Application                  | None     | 1         | A      |
| BPO_RSI | BPO_RSI Windows Application              | None     | 1         | A      |
| BPO_TEL | BPO_TEL Windows Application              | None     | 1         | A      |
| BPOTech | BPOTechConnect Handheld Device Applic... | None     | 1         | A      |
| DM      | Default Methodology                      | None     | 1         | A      |
| INST    | Installation                             | None     | 1         | A      |
| NETC    | Network Configuration                    | None     | 3         | A      |

|   |                       |                  |  |    |     |
|---|-----------------------|------------------|--|----|-----|
| Reporting : Report Sub Types                    | tbRPTSSavedReports    | fldReportSubType |  | 50 | Yes |
| Reporting : Report Types                        | tbRPTSSavedReports    | fldReportType    |  | 50 | Yes |
| Reporting : System Report Parameters            | tbRPTSSProcParameters | fldProcParamData |  | 50 | No  |
| Reporting : ServiceProfitability: Excluded Fees | ServiceProfit         | Fee              |  | 3  | No  |

Open Windows

02 Aug 2021

MNU.108.043